

Product datasheet for **TA303201**

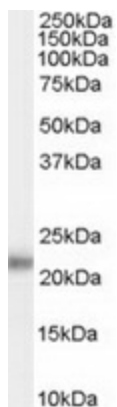
Kallikrein 2 (KLK2) Goat Polyclonal Antibody

Product data:

Product Type:	Primary Antibodies
Applications:	WB
Recommended Dilution:	ELISA: 1:16,000. WB: 0.1-0.3µg/ml.
Reactivity:	Human
Host:	Goat
Isotype:	IgG
Clonality:	Polyclonal
Immunogen:	Peptide with sequence C-KHQSLRPDEDSSHD, from the internal region of the protein sequence according to NP_005542.1; NP_001002231.1.
Formulation:	Supplied at 0.5 mg/ml in Tris saline, 0.02% sodium azide, pH7.3 with 0.5% bovine serum albumin.
Concentration:	lot specific
Purification:	Purified from goat serum by ammonium sulphate precipitation followed by antigen affinity chromatography using the immunizing peptide. Supplied at 0.5 mg/ml in Tris saline, 0.02% sodium azide, pH7.3 with 0.5% bovine serum albumin. Aliquot and store at -20°C. Minimize freezing and thawing.
Conjugation:	Unconjugated
Storage:	Store at -20°C as received.
Stability:	Stable for 12 months from date of receipt.
Gene Name:	kallikrein related peptidase 2
Database Link:	NP_001002231 Entrez Gene 3817 Human P20151
Background:	Glandular kallikreins cleave Met-Lys and Arg-Ser bonds in kininogen to release Lys-bradykinin
Synonyms:	hGK-1; hK2; KLK2A2
Protein Families:	Druggable Genome, Protease



[View online »](#)

Product images:

TA303201 (0.1ug/ml) staining of Human Prostate lysate (35ug protein in RIPA buffer). Primary incubation was 1 hour. Detected by chemiluminescence.