

Product datasheet for **TA303190**

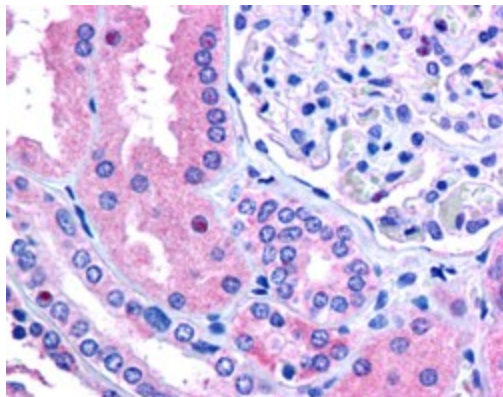
C17orf27 (RNF213) Goat Polyclonal Antibody

Product data:

Product Type:	Primary Antibodies
Applications:	IHC
Recommended Dilution:	ELISA: 1:4,000. WB: 2.5µg/ml.
Reactivity:	Human
Host:	Goat
Isotype:	IgG
Clonality:	Polyclonal
Immunogen:	Peptide with sequence C-KTAAVLKWNRE, from the C Terminus of the protein sequence according to NP_065965.3.
Formulation:	Supplied at 0.5 mg/ml in Tris saline, 0.02% sodium azide, pH7.3 with 0.5% bovine serum albumin.
Concentration:	lot specific
Purification:	Purified from goat serum by ammonium sulphate precipitation followed by antigen affinity chromatography using the immunizing peptide. Supplied at 0.5 mg/ml in Tris saline, 0.02% sodium azide, pH7.3 with 0.5% bovine serum albumin. Aliquot and store at -20°C. Minimize freezing and thawing.
Conjugation:	Unconjugated
Storage:	Store at -20°C as received.
Stability:	Stable for 12 months from date of receipt.
Gene Name:	ring finger protein 213
Database Link:	NP_065965 Entrez Gene 57674 Human Q63HN8
Background:	ring finger protein 213
Synonyms:	C17orf27; DKFZp762N1115; FLJ13051; KIAA1554; KIAA1618; MGC9929; MGC46622; NET57
Protein Families:	Druggable Genome, Transcription Factors



[View online »](#)

Product images:

TA303190 (2.5ug/ml) staining of paraffin embedded human kidney. Steamed antigen retrieval with citrate buffer pH 6, AP-staining