

Product datasheet for **TA303189**

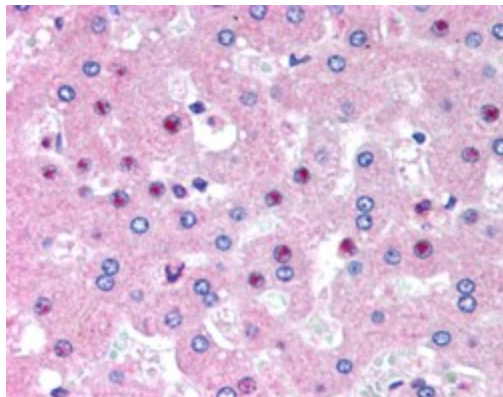
C14orf68 (SLC25A47) Goat Polyclonal Antibody

Product data:

Product Type:	Primary Antibodies
Applications:	IHC
Recommended Dilution:	ELISA: 1:32,000. WB: 2.5µg/ml.
Reactivity:	Human
Host:	Goat
Isotype:	IgG
Clonality:	Polyclonal
Immunogen:	Peptide with sequence C-KSRLQADGQGQRR, from the internal region of the protein sequence according to NP_997000.2.
Formulation:	Supplied at 0.5 mg/ml in Tris saline, 0.02% sodium azide, pH7.3 with 0.5% bovine serum albumin.
Concentration:	lot specific
Purification:	Purified from goat serum by ammonium sulphate precipitation followed by antigen affinity chromatography using the immunizing peptide. Supplied at 0.5 mg/ml in Tris saline, 0.02% sodium azide, pH7.3 with 0.5% bovine serum albumin. Aliquot and store at -20°C. Minimize freezing and thawing.
Conjugation:	Unconjugated
Storage:	Store at -20°C as received.
Stability:	Stable for 12 months from date of receipt.
Gene Name:	solute carrier family 25 member 47
Database Link:	NP_997000 Entrez Gene 283600 Human Q6Q0C1
Background:	Uncoupling protein which may catalyze the physiological 'proton leak' in liver. Overexpression induces the dissipation of mitochondrial membrane potential.
Synonyms:	C14orf68; HDMCP; HMFN1655
Protein Families:	Druggable Genome, Transmembrane



[View online »](#)

Product images:

TA303189 (2.5ug/ml) staining of paraffin embedded Human Liver. Steamed antigen retrieval with citrate buffer pH 6, AP-staining.