

## Product datasheet for **TA303187**

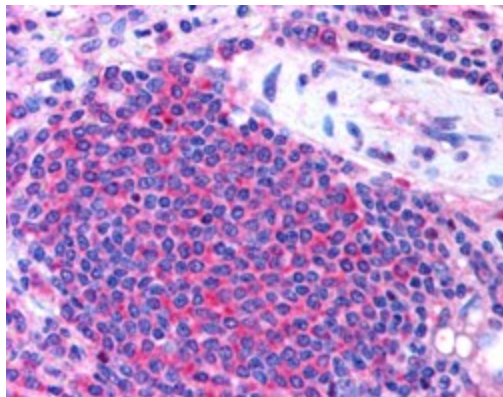
### UBASH3A Goat Polyclonal Antibody

#### Product data:

Product Type:	Primary Antibodies
Applications:	IHC
Recommended Dilution:	ELISA: 1:64,000. WB: 2.5µg/ml.
Reactivity:	Human (Expected from sequence similarity: Dog)
Host:	Goat
Isotype:	IgG
Clonality:	Polyclonal
Immunogen:	Peptide with sequence QQCSTPDGKYRPPD, from the internal region of the protein sequence according to NP_061834.1; NP_001001895.1.
Formulation:	Supplied at 0.5 mg/ml in Tris saline, 0.02% sodium azide, pH7.3 with 0.5% bovine serum albumin.
Concentration:	lot specific
Purification:	Purified from goat serum by ammonium sulphate precipitation followed by antigen affinity chromatography using the immunizing peptide. Supplied at 0.5 mg/ml in Tris saline, 0.02% sodium azide, pH7.3 with 0.5% bovine serum albumin. Aliquot and store at -20°C. Minimize freezing and thawing.
Conjugation:	Unconjugated
Storage:	Store at -20°C as received.
Stability:	Stable for 12 months from date of receipt.
Gene Name:	ubiquitin associated and SH3 domain containing A
Database Link:	<a href="#">NP_001001895</a> <a href="#">Entrez Gene 487779 Dog</a> <a href="#">Entrez Gene 53347 Human</a> <a href="#">P57075</a>
Background:	Interferes with CBL-mediated down-regulation and degradation of receptor-type tyrosine kinases. Promotes accumulation of activated target receptors, such as T-cell receptors, EGFR and PDGFRB, on the cell surface
Synonyms:	CLIP4; STS-2; TULA; TULA-1
Protein Families:	Druggable Genome



[View online »](#)

**Product images:**

TA303187 (2.5ug/ml) staining of paraffin embedded Human Spleen. Steamed antigen retrieval with citrate buffer pH 6, AP-staining.