

## Product datasheet for **TA303167**

### PI 3 Kinase catalytic subunit alpha (PIK3CA) Goat Polyclonal Antibody

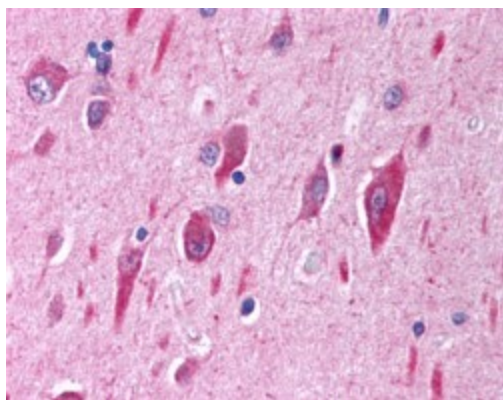
#### Product data:

Product Type:	Primary Antibodies
Applications:	IHC
Recommended Dilution:	ELISA: 1:128,000. WB: 2-3µg/ml.
Reactivity:	Human (Expected from sequence similarity: Mouse, Rat, Dog, Cow)
Host:	Goat
Isotype:	IgG
Clonality:	Polyclonal
Immunogen:	Peptide with sequence C-HQWLKDKNKGEIYD, from the internal region of the protein sequence according to NP_006209.2.
Formulation:	Supplied at 0.5 mg/ml in Tris saline, 0.02% sodium azide, pH7.3 with 0.5% bovine serum albumin.
Concentration:	lot specific
Purification:	Purified from goat serum by ammonium sulphate precipitation followed by antigen affinity chromatography using the immunizing peptide. Supplied at 0.5 mg/ml in Tris saline, 0.02% sodium azide, pH7.3 with 0.5% bovine serum albumin. Aliquot and store at -20°C. Minimize freezing and thawing.
Conjugation:	Unconjugated
Storage:	Store at -20°C as received.
Stability:	Stable for 12 months from date of receipt.
Gene Name:	phosphatidylinositol-4,5-bisphosphate 3-kinase catalytic subunit alpha
Database Link:	<a href="#">NP_006209</a> <a href="#">Entrez Gene 18706 Mouse</a> <a href="#">Entrez Gene 170911 Rat</a> <a href="#">Entrez Gene 488084 Dog</a> <a href="#">Entrez Gene 5290 Human</a> <a href="#">P42336</a>
Background:	Phosphatidylinositol 3-kinase is composed of an 85 kDa regulatory subunit and a 110 kDa catalytic subunit. The protein encoded by this gene represents the catalytic subunit, which uses ATP to phosphorylate PtdIns, PtdIns4P and PtdIns(4,5)P2. This gene has been found to be oncogenic and has been implicated in cervical cancers. [provided by RefSeq]



[View online »](#)

<b>Synonyms:</b>	CLOVE; CWS5; MCAP; MCM; MCMTTC; p110-alpha; PI3K; PI3K-alpha
<b>Protein Families:</b>	Druggable Genome
<b>Protein Pathways:</b>	Acute myeloid leukemia, Apoptosis, B cell receptor signaling pathway, Chemokine signaling pathway, Chronic myeloid leukemia, Colorectal cancer, Endometrial cancer, ErbB signaling pathway, Fc epsilon RI signaling pathway, Fc gamma R-mediated phagocytosis, Focal adhesion, Glioma, Inositol phosphate metabolism, Insulin signaling pathway, Jak-STAT signaling pathway, Leukocyte transendothelial migration, Melanoma, mTOR signaling pathway, Natural killer cell mediated cytotoxicity, Neurotrophin signaling pathway, Non-small cell lung cancer, Pancreatic cancer, Pathways in cancer, Phosphatidylinositol signaling system, Progesterone-mediated oocyte maturation, Prostate cancer, Regulation of actin cytoskeleton, Renal cell carcinoma, Small cell lung cancer, T cell receptor signaling pathway, Toll-like receptor signaling pathway, Type II diabetes mellitus, VEGF signaling pathway

**Product images:**

TA303167 (2.5ug/ml) staining of paraffin embedded Human Brain (Cerebellar Cortex). Steamed antigen retrieval with citrate buffer pH 6, AP-staining.