

Product datasheet for **TA303158**

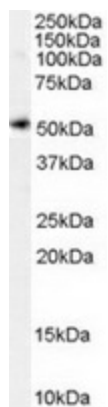
xCT (SLC7A11) Goat Polyclonal Antibody

Product data:

Product Type:	Primary Antibodies
Applications:	WB
Recommended Dilution:	ELISA: 1:128,000. WB: 0.02-0.06µg/ml.
Reactivity:	Human, Rat (Expected from sequence similarity: Dog)
Host:	Goat
Isotype:	IgG
Clonality:	Polyclonal
Immunogen:	Peptide with sequence C-KGQTQNFKDAFSGRD, from the internal region of the protein sequence according to NP_055146.1.
Formulation:	Supplied at 0.5 mg/ml in Tris saline, 0.02% sodium azide, pH7.3 with 0.5% bovine serum albumin.
Concentration:	lot specific
Purification:	Purified from goat serum by ammonium sulphate precipitation followed by antigen affinity chromatography using the immunizing peptide. Supplied at 0.5 mg/ml in Tris saline, 0.02% sodium azide, pH7.3 with 0.5% bovine serum albumin. Aliquot and store at -20°C. Minimize freezing and thawing.
Conjugation:	Unconjugated
Storage:	Store at -20°C as received.
Stability:	Stable for 12 months from date of receipt.
Gene Name:	solute carrier family 7 member 11
Database Link:	NP_055146 Entrez Gene 310392 RatEntrez Gene 483821 DogEntrez Gene 23657 Human Q9UPY5
Background:	SLC7A11 is a member of a heteromeric Na(+)-independent anionic amino acid transport system highly specific for cystine and glutamate. In this system, designated system Xc(-), the anionic form of cystine is transported in exchange for glutamate. [supplied by OMIM]
Synonyms:	CcBR1; xCT
Protein Families:	Druggable Genome, Transmembrane



[View online »](#)

Product images:

TA303158 (0.02ug/ml) staining of Human Spleen lysate (35ug protein in RIPA buffer). Primary incubation was 1 hour. Detected by chemiluminescence.