

Product datasheet for **TA303157**

Gfap Goat Polyclonal Antibody

Product data:

Product Type:	Primary Antibodies
Applications:	PEP-ELISA, WB
Recommended Dilution:	ELISA: 1:64,000, WB: 0.3-1ug/ml, IHC: 2-4ug/ml, Assay: 5-10ug/ml
Reactivity:	Human, Mouse (Expected from sequence similarity: Rat, Dog)
Host:	Goat
Isotype:	IgG
Clonality:	Polyclonal
Immunogen:	Peptide with sequence C-DGEVIKESKQEHKD, from the C Terminus of the protein sequence according to NP_002046.1.
Formulation:	Supplied at 0.5 mg/ml in Tris saline, 0.02% sodium azide, pH7.3 with 0.5% bovine serum albumin.
Concentration:	lot specific
Purification:	Purified from goat serum by ammonium sulphate precipitation followed by antigen affinity chromatography using the immunizing peptide. Supplied at 0.5 mg/ml in Tris saline, 0.02% sodium azide, pH7.3 with 0.5% bovine serum albumin. Aliquot and store at -20°C. Minimize freezing and thawing.
Conjugation:	Unconjugated
Storage:	Store at -20°C as received.
Stability:	Stable for 12 months from date of receipt.
Gene Name:	glial fibrillary acidic protein
Database Link:	NP_034407 Entrez Gene 2670 Human Entrez Gene 24387 Rat Entrez Gene 480495 Dog Entrez Gene 14580 Mouse P03995



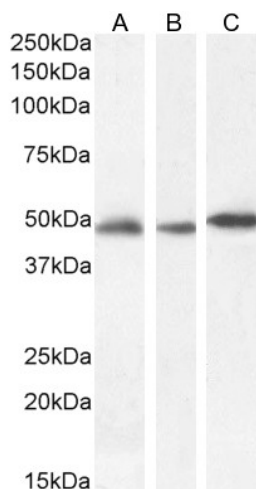
[View online »](#)

Background:

This gene encodes one of the major intermediate filament proteins of mature astrocytes. It is used as a marker to distinguish astrocytes from other glial cells during development. Mutations in this gene cause Alexander disease, a rare disorder of astrocytes in the central nervous system. Alternative splicing results in multiple transcript variants encoding distinct isoforms. [provided by RefSeq]

Synonyms:

FLJ45472

Product images:

TA303157 (0.001 $\mu\text{g/ml}$) staining of Human Cerebellum (A), (0.1 $\mu\text{g/ml}$) Mouse Brain (B) and (0.03 $\mu\text{g/ml}$) Rat Brain (C) lysate (35 μg protein in RIPA buffer). Detected by chemiluminescence.