

## Product datasheet for **TA303152**

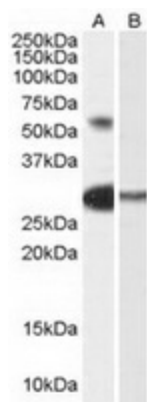
### TCFL5 Goat Polyclonal Antibody

#### Product data:

Product Type:	Primary Antibodies
Applications:	WB
Recommended Dilution:	ELISA: 1:64,000. WB: 0.3-1 µg/ml.
Reactivity:	Human (Expected from sequence similarity: Mouse, Rat, Dog)
Host:	Goat
Isotype:	IgG
Clonality:	Polyclonal
Immunogen:	Peptide with sequence C-KYIQRHGD <del>SL</del> KKE, from the internal region of the protein sequence according to NP_006593.2.
Formulation:	Supplied at 0.5 mg/ml in Tris saline, 0.02% sodium azide, pH7.3 with 0.5% bovine serum albumin.
Concentration:	lot specific
Purification:	Purified from goat serum by ammonium sulphate precipitation followed by antigen affinity chromatography using the immunizing peptide. Supplied at 0.5 mg/ml in Tris saline, 0.02% sodium azide, pH7.3 with 0.5% bovine serum albumin. Aliquot and store at -20°C. Minimize freezing and thawing.
Conjugation:	Unconjugated
Storage:	Store at -20°C as received.
Stability:	Stable for 12 months from date of receipt.
Gene Name:	transcription factor like 5
Database Link:	<a href="#">NP_006593</a> <a href="#">Entrez Gene 277353</a> <a href="#">MouseEntrez Gene 311715</a> <a href="#">RatEntrez Gene 612441</a> <a href="#">DogEntrez Gene 10732</a> <a href="#">Human Q9UL49</a>
Background:	Putative transcription factor. Isoform 3 may play a role in early spermatogenesis
Synonyms:	bHLHe82; CHA; E2BP-1; Figlb; SOSF1
Protein Families:	Druggable Genome, Transcription Factors



[View online »](#)

**Product images:**

TA303152 (0.3ug/ml) staining of Human Testis lysate (35ug protein in RIPA buffer) with (B) and without (A) blocking with the immunising peptide. Primary incubation was 1 hour. Detected by chemiluminescence.