

Product datasheet for **TA303147**

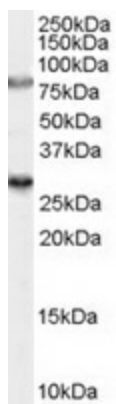
Sv2a Goat Polyclonal Antibody

Product data:

Product Type:	Primary Antibodies
Applications:	WB
Recommended Dilution:	ELISA: 1:64,000. WB: 0.3-1 µg/ml.
Reactivity:	Rat (Expected from sequence similarity: Human, Mouse, Dog, Pig, Cow)
Host:	Goat
Isotype:	IgG
Clonality:	Polyclonal
Immunogen:	Peptide with sequence C-TVELYPSDKRRTA, from the internal region of the protein sequence according to NP_055664.2.
Formulation:	Supplied at 0.5 mg/ml in Tris saline, 0.02% sodium azide, pH7.3 with 0.5% bovine serum albumin.
Concentration:	lot specific
Purification:	Purified from goat serum by ammonium sulphate precipitation followed by antigen affinity chromatography using the immunizing peptide. Supplied at 0.5 mg/ml in Tris saline, 0.02% sodium azide, pH7.3 with 0.5% bovine serum albumin. Aliquot and store at -20°C. Minimize freezing and thawing.
Conjugation:	Unconjugated
Storage:	Store at -20°C as received.
Stability:	Stable for 12 months from date of receipt.
Gene Name:	synaptic vesicle glycoprotein 2a
Database Link:	NP_476558 Entrez Gene 9900 Human Entrez Gene 64051 Mouse Entrez Gene 100855661 Dog Entrez Gene 117559 Rat Q02563
Background:	Plays a role in the control of regulated secretion in neural and endocrine cells, enhancing selectively low-frequency neurotransmission. Positively regulates vesicle fusion by maintaining the readily releasable pool of secretory vesicles (By similarity)
Synonyms:	KIAA0736; SV2



[View online »](#)

Product images:

TA303147 (0.3ug/ml) staining of rat brain lysate (35ug protein in RIPA buffer). Primary incubation was 1 hour. Detected by chemiluminescence.