

Product datasheet for **TA303110**

Slc24a5 Goat Polyclonal Antibody

Product data:

Product Type:	Primary Antibodies
Applications:	WB
Recommended Dilution:	ELISA: 1:2,000. WB: 1-3µg/ml.
Reactivity:	Mouse, Rat (Expected from sequence similarity: Human, Dog)
Host:	Goat
Isotype:	IgG
Clonality:	Polyclonal
Immunogen:	Peptide with sequence TTPDCRKKFWKN, from the internal region of the protein sequence according to NP_995322.1.
Formulation:	Supplied at 0.5 mg/ml in Tris saline, 0.02% sodium azide, pH7.3 with 0.5% bovine serum albumin.
Concentration:	lot specific
Purification:	Purified from goat serum by ammonium sulphate precipitation followed by antigen affinity chromatography using the immunizing peptide. Supplied at 0.5 mg/ml in Tris saline, 0.02% sodium azide, pH7.3 with 0.5% bovine serum albumin. Aliquot and store at -20°C. Minimize freezing and thawing.
Conjugation:	Unconjugated
Storage:	Store at -20°C as received.
Stability:	Stable for 12 months from date of receipt.
Gene Name:	solute carrier family 24, member 5
Database Link:	NP_778199 Entrez Gene 283652 Human Entrez Gene 311387 Rat Entrez Gene 612878 Dog Entrez Gene 317750 Mouse Q8C261

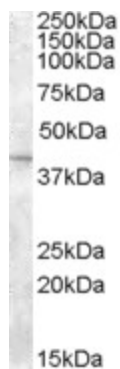


[View online »](#)

Background: This gene is a member of the potassium-dependent sodium/calcium exchanger family and encodes an intracellular membrane protein with 2 large hydrophilic loops and 2 sets of multiple transmembrane-spanning segments. Sequence variation in this gene has been associated with differences in skin pigmentation. [provided by RefSeq]. COMPLETENESS: complete on the 3' end.

Synonyms: JSX; NCKX5; SHEP4

Product images:



TA303110 (2ug/ml) staining of Mouse Eye lysate (35ug protein in RIPA buffer). Primary incubation was 1 hour. Detected by chemiluminescence.