

Product datasheet for **TA303105**

EXOC7 Goat Polyclonal Antibody

Product data:

Product Type:	Primary Antibodies
Applications:	IHC, WB
Recommended Dilution:	ELISA: 1:16,000. WB: 0.5-1.5µg/ml. IHC: 5-10µg/ml.
Reactivity:	Human (Expected from sequence similarity: Mouse, Rat, Pig, Cow)
Host:	Goat
Isotype:	IgG
Clonality:	Polyclonal
Immunogen:	Peptide with sequence C-DNIKNDPDKEYN, from the internal region of the protein sequence according to NP_001013861.1; NP_056034.2.
Formulation:	Supplied at 0.5 mg/ml in Tris saline, 0.02% sodium azide, pH7.3 with 0.5% bovine serum albumin.
Concentration:	lot specific
Purification:	Purified from goat serum by ammonium sulphate precipitation followed by antigen affinity chromatography using the immunizing peptide. Supplied at 0.5 mg/ml in Tris saline, 0.02% sodium azide, pH7.3 with 0.5% bovine serum albumin. Aliquot and store at -20°C. Minimize freezing and thawing.
Conjugation:	Unconjugated
Storage:	Store at -20°C as received.
Stability:	Stable for 12 months from date of receipt.
Gene Name:	exocyst complex component 7
Database Link:	NP_001013861 Entrez Gene 53413 Mouse Entrez Gene 64632 Rat Entrez Gene 23265 Human Q9UPT5
Background:	EXOC7 is a component of the exocyst, which is an evolutionarily conserved octameric protein complex essential for exocytosis. The exocyst targets secretory vesicles at specific domains of the plasma membrane for cell surface expansion and protein secretion (Zuo et al., 2006 [PubMed 17086175]). [supplied by OMIM]
Synonyms:	2-5-3p; EXO70; EXO70; Exo70p; EXOC1; YJL085W



[View online »](#)

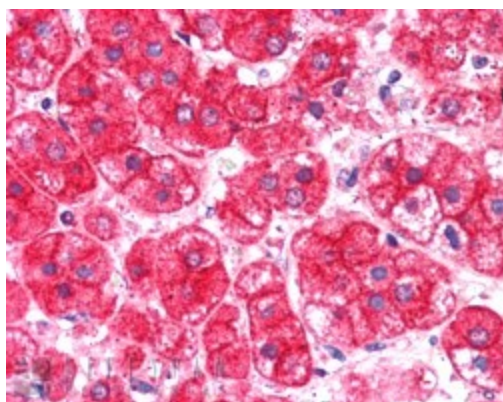
Protein Families: Druggable Genome

Protein Pathways: Insulin signaling pathway

Product images:



TA303105 (0.5ug/ml) staining of Human Lung lysate (35ug protein in RIPA buffer). Primary incubation was 1 hour. Detected by chemiluminescence.



TA303105 (0.5ug/ml) staining of paraffin embedded Human Pancreas. Steamed antigen retrieval with citrate buffer pH 6, AP-staining.