

Product datasheet for **TA303098**

SMAD9 Goat Polyclonal Antibody

Product data:

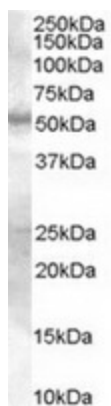
Product Type:	Primary Antibodies
Applications:	WB
Recommended Dilution:	ELISA: 1:64,000. WB: 0.3-1.0 µg/ml.
Reactivity:	Human (Expected from sequence similarity: Mouse, Rat, Dog)
Host:	Goat
Isotype:	IgG
Clonality:	Polyclonal
Immunogen:	Peptide with sequence C-HSEPLMPHNATYPD, from the internal region of the protein sequence according to NP_005896.1.
Formulation:	Supplied at 0.5 mg/ml in Tris saline, 0.02% sodium azide, pH7.3 with 0.5% bovine serum albumin.
Concentration:	lot specific
Purification:	Purified from goat serum by ammonium sulphate precipitation followed by antigen affinity chromatography using the immunizing peptide. Supplied at 0.5 mg/ml in Tris saline, 0.02% sodium azide, pH7.3 with 0.5% bovine serum albumin. Aliquot and store at -20°C. Minimize freezing and thawing.
Conjugation:	Unconjugated
Storage:	Store at -20°C as received.
Stability:	Stable for 12 months from date of receipt.
Gene Name:	SMAD family member 9
Database Link:	NP_001120689 Entrez Gene 55994 Mouse Entrez Gene 85435 Rat Entrez Gene 486006 Dog Entrez Gene 4093 Human O15198
Background:	Transcriptional modulator activated by BMP (bone morphogenetic proteins) type 1 receptor kinase. SMAD9 is a receptor-regulated SMAD (R-SMAD)
Synonyms:	MADH6; MADH9; PPH2; SMAD8; SMAD8A; SMAD8B
Protein Families:	ES Cell Differentiation/IPS, Transcription Factors



[View online »](#)

Protein Pathways: TGF-beta signaling pathway

Product images:



TA303098 (0.3ug/ml) staining of Human Skin lysate (35ug protein in RIPA buffer). Primary incubation was 1 hour. Detected by chemiluminescence.