

Product datasheet for **TA303091**

SH3PX1 (SNX9) Goat Polyclonal Antibody

Product data:

Product Type:	Primary Antibodies
Applications:	WB
Recommended Dilution:	ELISA: 1:1,000. WB: 0.1-0.3µg/ml.
Reactivity:	Human (Expected from sequence similarity: Mouse, Dog)
Host:	Goat
Isotype:	IgG
Clonality:	Polyclonal
Immunogen:	Peptide with sequence C-HKGAIEKVKESDK, from the internal region of the protein sequence according to NP_057308.1.
Formulation:	Supplied at 0.5 mg/ml in Tris saline, 0.02% sodium azide, pH7.3 with 0.5% bovine serum albumin.
Concentration:	lot specific
Purification:	Purified from goat serum by ammonium sulphate precipitation followed by antigen affinity chromatography using the immunizing peptide. Supplied at 0.5 mg/ml in Tris saline, 0.02% sodium azide, pH7.3 with 0.5% bovine serum albumin. Aliquot and store at -20°C. Minimize freezing and thawing.
Conjugation:	Unconjugated
Storage:	Store at -20°C as received.
Stability:	Stable for 12 months from date of receipt.
Gene Name:	sorting nexin 9
Database Link:	NP_057308 Entrez Gene 66616 Mouse Entrez Gene 476254 Dog Entrez Gene 51429 Human Q9Y5X1



[View online »](#)

Background:

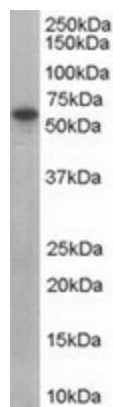
This gene encodes a member of the sorting nexin family. Members of this family contain a phox (PX) domain, which is a phosphoinositide binding domain, and are involved in intracellular trafficking. This protein does not contain a coiled coil region, like some family members, but does contain a SH3 domain near its N-terminus. This protein interacts with the cytoplasmic domains of the precursor but not the processed forms of a disintegrin and metalloprotease domain 9 and 15. This protein binds the beta-appendage domain of adaptor protein 2 and may function to assist adaptor protein 2 in its role at the plasma membrane. This protein interacts with activated Cdc42-associated kinase-2 to regulate the degradation of epidermal growth factor receptor protein. [provided by RefSeq]

Synonyms:

SDP1; SH3PX1; SH3PXD3A; WISP

Protein Families:

Druggable Genome

Product images:


TA303091 (0.1ug/ml) staining of human placenta lysate (35ug protein in RIPA buffer). Primary incubation was 1 hour. Detected by chemiluminescence.