

## Product datasheet for **TA303087**

### p27 KIP 1 (CDKN1B) Goat Polyclonal Antibody

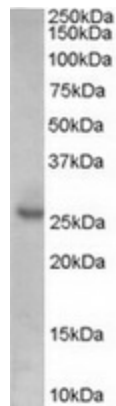
#### Product data:

Product Type:	Primary Antibodies
Applications:	WB
Recommended Dilution:	ELISA: 1:32,000. WB: 0.1-0.3µg/ml.
Reactivity:	Human (Expected from sequence similarity: Mouse, Rat, Feline, Dog, Pig, Cow)
Host:	Goat
Isotype:	IgG
Clonality:	Polyclonal
Immunogen:	Peptide with sequence C-KRPATDDSSSTQNK, from the internal region of the protein sequence according to NP_004055.1.
Formulation:	Supplied at 0.5 mg/ml in Tris saline, 0.02% sodium azide, pH7.3 with 0.5% bovine serum albumin.
Concentration:	lot specific
Purification:	Purified from goat serum by ammonium sulphate precipitation followed by antigen affinity chromatography using the immunizing peptide. Supplied at 0.5 mg/ml in Tris saline, 0.02% sodium azide, pH7.3 with 0.5% bovine serum albumin. Aliquot and store at -20°C. Minimize freezing and thawing.
Conjugation:	Unconjugated
Storage:	Store at -20°C as received.
Stability:	Stable for 12 months from date of receipt.
Gene Name:	cyclin-dependent kinase inhibitor 1B
Database Link:	<a href="#">NP_004055</a> <a href="#">Entrez Gene 12576 Mouse</a> <a href="#">Entrez Gene 83571 Rat</a> <a href="#">Entrez Gene 403429 Dog</a> <a href="#">Entrez Gene 1027 Human</a> <a href="#">P46527</a>



[View online »](#)

<b>Background:</b>	This gene encodes a cyclin-dependent kinase inhibitor, which shares a limited similarity with CDK inhibitor CDKN1A/p21. The encoded protein binds to and prevents the activation of cyclin E-CDK2 or cyclin D-CDK4 complexes, and thus controls the cell cycle progression at G1. The degradation of this protein, which is triggered by its CDK dependent phosphorylation and subsequent ubiquitination by SCF complexes, is required for the cellular transition from quiescence to the proliferative state. [provided by RefSeq]
<b>Synonyms:</b>	CDKN4; KIP1; MEN1B; MEN4; P27KIP1
<b>Protein Families:</b>	Druggable Genome
<b>Protein Pathways:</b>	Cell cycle, Chronic myeloid leukemia, ErbB signaling pathway, Pathways in cancer, Prostate cancer, Small cell lung cancer

**Product images:**

TA303087 (0.1ug/ml) staining of Human Prostate lysate (35ug protein in RIPA buffer). Primary incubation was 1 hour. Detected by chemiluminescence.