

Product datasheet for **TA303084**

Stathmin 1 (STMN1) Goat Polyclonal Antibody

Product data:

Product Type:	Primary Antibodies
Applications:	WB
Recommended Dilution:	ELISA: 1:1,000. WB: 1-3µg/ml.
Reactivity:	Human, Mouse (Expected from sequence similarity: Rat)
Host:	Goat
Isotype:	IgG
Clonality:	Polyclonal
Immunogen:	Peptide with sequence C-KNKESKDPADETEAD, from the C Terminus of the protein sequence according to NP_005554.1; NP_981944.1; NP_981946.1.
Formulation:	Supplied at 0.5 mg/ml in Tris saline, 0.02% sodium azide, pH7.3 with 0.5% bovine serum albumin.
Concentration:	lot specific
Purification:	Purified from goat serum by ammonium sulphate precipitation followed by antigen affinity chromatography using the immunizing peptide. Supplied at 0.5 mg/ml in Tris saline, 0.02% sodium azide, pH7.3 with 0.5% bovine serum albumin. Aliquot and store at -20°C. Minimize freezing and thawing.
Conjugation:	Unconjugated
Storage:	Store at -20°C as received.
Stability:	Stable for 12 months from date of receipt.
Gene Name:	stathmin 1
Database Link:	NP_005554 Entrez Gene 16765 Mouse Entrez Gene 29332 Rat Entrez Gene 3925 Human P16949



[View online »](#)

Background:

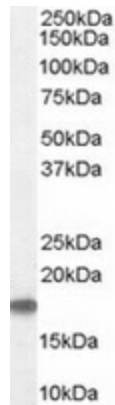
This gene belongs to the stathmin family of genes. It encodes a ubiquitous cytosolic phosphoprotein proposed to function as an intracellular relay integrating regulatory signals of the cellular environment. The encoded protein is involved in the regulation of the microtubule filament system by destabilizing microtubules. It prevents assembly and promotes disassembly of microtubules. Alternatively spliced transcript variants encoding the same protein have been identified. [provided by RefSeq]

Synonyms:

C1orf215; Lag; LAP18; OP18; PP17; PP19; PR22; SMN

Protein Pathways:

MAPK signaling pathway

Product images:

TA303084 (1ug/ml) staining of Human Testes Lysate (35ug protein in RIPA buffer). Primary incubation was 1 hour. Detected by chemiluminescence.