

Product datasheet for **TA303082**

CD14 Goat Polyclonal Antibody

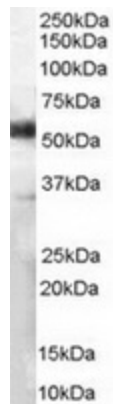
Product data:

Product Type:	Primary Antibodies
Applications:	FC, IHC, PEP-ELISA, WB
Recommended Dilution:	Western blot: 1-3µg/ml. Primary incubation 1 hour at room temperature. Approx 55kDa band observed in Human Lymph node and Tonsil lysates (calculated MW of 40.1kDa according to NP_000582.1).The observed molecular weight corresponds to the glycosylated form, and was successfully blocked by incubation with the immunizing peptide. Flow Cytometry: 10ug/ml. Flow cytometric analysis of A549 cells.
Reactivity:	Human
Host:	Goat
Isotype:	IgG
Clonality:	Polyclonal
Immunogen:	Peptide with sequence C-KRVDADADPRQYAD, from the internal region of the protein sequence according to NP_000582.1.
Formulation:	Supplied at 0.5 mg/ml in Tris saline, 0.02% sodium azide, pH7.3 with 0.5% bovine serum albumin.
Concentration:	lot specific
Purification:	Purified from goat serum by ammonium sulphate precipitation followed by antigen affinity chromatography using the immunizing peptide. Supplied at 0.5 mg/ml in Tris saline, 0.02% sodium azide, pH7.3 with 0.5% bovine serum albumin. Aliquot and store at -20°C. Minimize freezing and thawing.
Conjugation:	Unconjugated
Storage:	Store at -20°C as received.
Stability:	Stable for 12 months from date of receipt.
Gene Name:	CD14 molecule
Database Link:	NP_000582 Entrez Gene 929 Human P08571



[View online »](#)

Background:	CD14 is a surface protein preferentially expressed on monocytes/macrophages. It binds lipopolysaccharide binding protein and recently has been shown to bind apoptotic cells. Alternative splicing results in multiple transcript variants encoding the same isoform. [provided by RefSeq]
Synonyms:	CD14 antigen; CD14 molecule; monocyte differentiation antigen CD14
Protein Families:	Adult stem cells, Druggable Genome, Embryonic stem cells, ES Cell Differentiation/IPS, Transmembrane
Protein Pathways:	Hematopoietic cell lineage, MAPK signaling pathway, Pathogenic Escherichia coli infection, Regulation of actin cytoskeleton, Toll-like receptor signaling pathway

Product images:

TA303082 (1 ug/ml) staining of Human Lymph Node lysate (35ug protein in RIPA buffer). Primary incubation was 1 hour. Detected by chemiluminescence.