

Product datasheet for **TA303077**

ROBO1 Goat Polyclonal Antibody

Product data:

Product Type:	Primary Antibodies
Applications:	WB
Recommended Dilution:	ELISA: 1:8,000. WB: 1-3µg/ml.
Reactivity:	Human (Expected from sequence similarity: Mouse, Rat, Dog, Cow)
Host:	Goat
Isotype:	IgG
Clonality:	Polyclonal
Immunogen:	Peptide with sequence C-GDVDLSNKINEMK, from the internal region of the protein sequence according to NP_002932.1; NP_598334.1.
Formulation:	Supplied at 0.5 mg/ml in Tris saline, 0.02% sodium azide, pH7.3 with 0.5% bovine serum albumin.
Concentration:	lot specific
Purification:	Purified from goat serum by ammonium sulphate precipitation followed by antigen affinity chromatography using the immunizing peptide. Supplied at 0.5 mg/ml in Tris saline, 0.02% sodium azide, pH7.3 with 0.5% bovine serum albumin. Aliquot and store at -20°C. Minimize freezing and thawing.
Conjugation:	Unconjugated
Storage:	Store at -20°C as received.
Stability:	Stable for 12 months from date of receipt.
Database Link:	NP_001139316 Entrez Gene 19876 Mouse Entrez Gene 58946 Rat Entrez Gene 487690 Dog



[View online »](#)

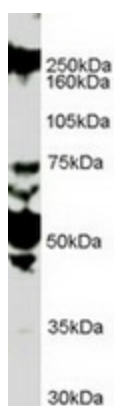
Background: Bilateral symmetric nervous systems have special midline structures that establish a partition between the two mirror image halves. Some axons project toward and across the midline in response to long-range chemoattractants emanating from the midline. In *Drosophila*, the roundabout gene, a member of the immunoglobulin gene superfamily, encodes an integral membrane protein that is both an axon guidance receptor and a cell adhesion receptor. This receptor is involved in the decision by axons to cross the central nervous system midline. The protein encoded by this gene is structurally similar to the *Drosophila* roundabout protein. Two transcript variants encoding different isoforms have been found for this gene. [provided by RefSeq]

Synonyms: axon guidance receptor; DUTT1; FLJ21882; homolog 1 (*Drosophila*); MGC131599; MGC133277; roundabout; roundabout 1; SAX3

Protein Families: Druggable Genome

Protein Pathways: Axon guidance

Product images:



TA303077 (1ug/ml) staining of HUVEC lysate (35ug protein in RIPA buffer). Primary incubation was 1 hour. Detected by chemiluminescence.