

Product datasheet for **TA303058**

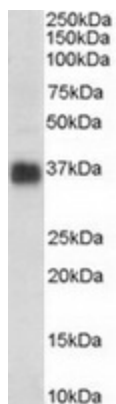
Clusterin (CLU) Goat Polyclonal Antibody

Product data:

Product Type:	Primary Antibodies
Applications:	WB
Recommended Dilution:	ELISA: 1:32,000. WB: 0.3-1.0µg/ml.
Reactivity:	Human (Expected from sequence similarity: Dog)
Host:	Goat
Isotype:	IgG
Clonality:	Polyclonal
Immunogen:	Peptide with sequence C-EKALQEYRKKHREE, from the C Terminus of the protein sequence according to NP_001822.2; NP_976084.1.
Formulation:	Supplied at 0.5 mg/ml in Tris saline, 0.02% sodium azide, pH7.3 with 0.5% bovine serum albumin.
Concentration:	lot specific
Purification:	Purified from goat serum by ammonium sulphate precipitation followed by antigen affinity chromatography using the immunizing peptide. Supplied at 0.5 mg/ml in Tris saline, 0.02% sodium azide, pH7.3 with 0.5% bovine serum albumin. Aliquot and store at -20°C. Minimize freezing and thawing.
Conjugation:	Unconjugated
Storage:	Store at -20°C as received.
Stability:	Stable for 12 months from date of receipt.
Gene Name:	clusterin
Database Link:	NP_001822 Entrez Gene 442971 Dog Entrez Gene 1191 Human P10909
Background:	Not yet clear. It is known to be expressed in a variety of tissues and it seems to be able to bind to cells, membranes and hydrophobic proteins. It has been associated with programmed cell death (apoptosis)
Synonyms:	AAG4; APO-J; APOJ; CLI; CLU1; CLU2; KUB1; NA1; NA2; SGP-2; SGP2; SP-40; TRPM-2; TRPM2
Protein Families:	Druggable Genome, Secreted Protein



[View online »](#)

Product images:

TA303058 (0.3ug/ml) staining of human colon lysate (35ug protein in RIPA buffer). Primary incubation was 1 hour. Detected by chemiluminescence.