

Product datasheet for **TA303052**

SPFH2 (ERLIN2) Goat Polyclonal Antibody

Product data:

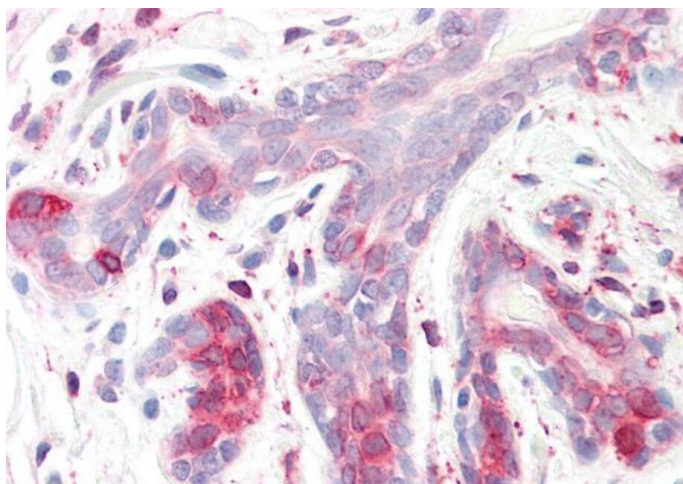
Product Type:	Primary Antibodies
Applications:	IHC, WB
Recommended Dilution:	ELISA: 1:2,000. WB: 0.3-1 µg/ml. IHC: 3.75 µg/ml
Reactivity:	Human (Expected from sequence similarity: Rat)
Host:	Goat
Isotype:	IgG
Clonality:	Polyclonal
Immunogen:	Peptide with sequence C-EDEPLETATKEN, from the C Terminus of the protein sequence according to NP_009106.1.
Formulation:	Supplied at 0.5 mg/ml in Tris saline, 0.02% sodium azide, pH7.3 with 0.5% bovine serum albumin.
Concentration:	lot specific
Purification:	Purified from goat serum by ammonium sulphate precipitation followed by antigen affinity chromatography using the immunizing peptide. Supplied at 0.5 mg/ml in Tris saline, 0.02% sodium azide, pH7.3 with 0.5% bovine serum albumin. Aliquot and store at -20°C. Minimize freezing and thawing.
Conjugation:	Unconjugated
Storage:	Store at -20°C as received.
Stability:	Stable for 12 months from date of receipt.
Gene Name:	ER lipid raft associated 2
Database Link:	NP_001003790 Entrez Gene 290823 Rat Entrez Gene 11160 Human O94905
Background:	Plays an important role in the early steps of the endoplasmic reticulum-associated degradation (ERAD) pathway. Involved in ITPR1 degradation by the ERAD pathway
Synonyms:	C8orf2; Erlin-2; NET32; SPFH2; SPG18



[View online »](#)

Product images:

TA303052 staining (1ug/ml) of Human Breast lysate (RIPA buffer, 30ug total protein per lane). Primary incubated for 1 hour. Detected by chemiluminescence.



TA303052 (3.75ug/ml) staining of paraffin embedded Human Breast. Steamed antigen retrieval with citrate buffer pH 6, AP-staining.