

## Product datasheet for **TA303049**

### **GATA1 Goat Polyclonal Antibody**

#### **Product data:**

<b>Product Type:</b>	Primary Antibodies
<b>Applications:</b>	WB
<b>Recommended Dilution:</b>	ELISA: 1:16,000. WB: 0.3-1.0µg/ml.
<b>Reactivity:</b>	Human (Expected from sequence similarity: Mouse, Rat, Dog, Cow)
<b>Host:</b>	Goat
<b>Isotype:</b>	IgG
<b>Clonality:</b>	Polyclonal
<b>Immunogen:</b>	Peptide with sequence C-DAEAYRHSPVFQ, from the internal region of the protein sequence according to NP_002040.1.
<b>Formulation:</b>	Supplied at 0.5 mg/ml in Tris saline, 0.02% sodium azide, pH7.3 with 0.5% bovine serum albumin.
<b>Concentration:</b>	lot specific
<b>Purification:</b>	Purified from goat serum by ammonium sulphate precipitation followed by antigen affinity chromatography using the immunizing peptide. Supplied at 0.5 mg/ml in Tris saline, 0.02% sodium azide, pH7.3 with 0.5% bovine serum albumin. Aliquot and store at -20°C. Minimize freezing and thawing.
<b>Conjugation:</b>	Unconjugated
<b>Storage:</b>	Store at -20°C as received.
<b>Stability:</b>	Stable for 12 months from date of receipt.
<b>Gene Name:</b>	GATA binding protein 1
<b>Database Link:</b>	<a href="#">NP_002040</a> <a href="#">Entrez Gene 14460 Mouse</a> <a href="#">Entrez Gene 25172 Rat</a> <a href="#">Entrez Gene 480906 Dog</a> <a href="#">Entrez Gene 2623 Human</a> <a href="#">P15976</a>
<b>Background:</b>	This gene encodes a protein which belongs to the GATA family of transcription factors. The protein plays an important role in erythroid development by regulating the switch of fetal hemoglobin to adult hemoglobin. Mutations in this gene have been associated with X-linked dyserythropoietic anemia and thrombocytopenia. [provided by RefSeq]

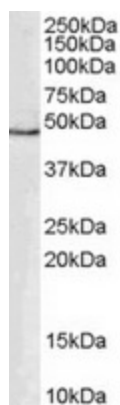


[View online »](#)

**Synonyms:** ERYF1; GATA-1; GF-1; GF1; NF-E1; NFE1; XLANP; XLTDA; XLTT

**Protein Families:** Adult stem cells, Druggable Genome, ES Cell Differentiation/IPS, Transcription Factors

**Product images:**



TA303049 (0.3ug/ml) staining of human PBMC lysate (35ug protein in RIPA buffer). Primary incubation was 1 hour. Detected by chemiluminescence.