

Product datasheet for **TA303040**

Osteopontin (SPP1) Goat Polyclonal Antibody

Product data:

Product Type:	Primary Antibodies
Applications:	WB
Recommended Dilution:	ELISA: 1:64,000. WB: 1-3µg/ml.
Reactivity:	Human (Expected from sequence similarity: Mouse, Rat, Dog)
Host:	Goat
Isotype:	IgG
Clonality:	Polyclonal
Immunogen:	Peptide with sequence C-DPKSKEEDKHLK, from the C Terminus of the protein sequence according to NP_000573.1.
Formulation:	Supplied at 0.5 mg/ml in Tris saline, 0.02% sodium azide, pH7.3 with 0.5% bovine serum albumin.
Concentration:	lot specific
Purification:	Purified from goat serum by ammonium sulphate precipitation followed by antigen affinity chromatography using the immunizing peptide. Supplied at 0.5 mg/ml in Tris saline, 0.02% sodium azide, pH7.3 with 0.5% bovine serum albumin. Aliquot and store at -20°C. Minimize freezing and thawing.
Conjugation:	Unconjugated
Storage:	Store at -20°C as received.
Stability:	Stable for 12 months from date of receipt.
Gene Name:	secreted phosphoprotein 1
Database Link:	NP_000573 Entrez Gene 20750 MouseEntrez Gene 25353 RatEntrez Gene 478471 DogEntrez Gene 6696 Human P10451
Background:	Acts as a cytokine involved in enhancing production of interferon-gamma and interleukin-12 and reducing production of interleukin-10 and is essential in the pathway that leads to type I immunity (By similarity)
Synonyms:	BNSP; BSPI; ETA-1; OPN

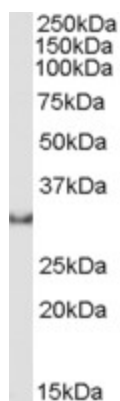


[View online »](#)

Protein Families: Druggable Genome, Secreted Protein

Protein Pathways: ECM-receptor interaction, Focal adhesion, Toll-like receptor signaling pathway

Product images:



TA303040 staining (1ug/ml) of MOLT4 cell lysate (RIPA buffer, 30ug total protein per lane). Primary incubated for 1 hour. Detected by western blot using chemiluminescence.