

## Product datasheet for **TA303039**

### Glutathione Peroxidase 2 (GPX2) Goat Polyclonal Antibody

#### Product data:

Product Type:	Primary Antibodies
Applications:	WB
Recommended Dilution:	ELISA: 1:4,000. WB: 1-3µg/ml.
Reactivity:	Human (Expected from sequence similarity: Mouse, Rat, Dog, Pig, Cow)
Host:	Goat
Isotype:	IgG
Clonality:	Polyclonal
Immunogen:	Peptide with sequence C-SLDGKVDNFN, from the internal region of the protein sequence according to NP_002074.2.
Formulation:	Supplied at 0.5 mg/ml in Tris saline, 0.02% sodium azide, pH7.3 with 0.5% bovine serum albumin.
Concentration:	lot specific
Purification:	Purified from goat serum by ammonium sulphate precipitation followed by antigen affinity chromatography using the immunizing peptide. Supplied at 0.5 mg/ml in Tris saline, 0.02% sodium azide, pH7.3 with 0.5% bovine serum albumin. Aliquot and store at -20°C. Minimize freezing and thawing.
Conjugation:	Unconjugated
Storage:	Store at -20°C as received.
Stability:	Stable for 12 months from date of receipt.
Gene Name:	glutathione peroxidase 2
Database Link:	<a href="#">NP_002074</a> <a href="#">Entrez Gene 14776 Mouse</a> <a href="#">Entrez Gene 29326 Rat</a> <a href="#">Entrez Gene 480356 Dog</a> <a href="#">Entrez Gene 2877 Human</a> <a href="#">P18283</a>



[View online »](#)

**Background:**

This gene is a member of the glutathione peroxidase family and encodes a selenium-dependent glutathione peroxidase that is one of two isoenzymes responsible for the majority of the glutathione-dependent hydrogen peroxide-reducing activity in the epithelium of the gastrointestinal tract. Studies in knockout mice indicate that mRNA expression levels respond to luminal microflora, suggesting a role of the ileal glutathione peroxidases in preventing inflammation in the GI tract. [provided by RefSeq]

**Synonyms:**

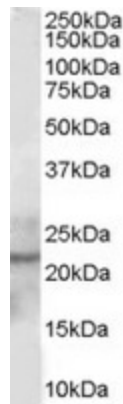
GI-GPx; GPRP; GPRP-2; GPx-2; GPx-GI; GSHPx-2; GSHPX-GI

**Protein Families:**

Druggable Genome

**Protein Pathways:**

Arachidonic acid metabolism, Glutathione metabolism

**Product images:**

TA303039 staining (1 ug/ml) of Human Prostate lysate (RIPA buffer, 30ug total protein per lane). Primary incubated for 1 hour. Detected by western blot using chemiluminescence.