

## Product datasheet for **TA303034**

### Col7a1 Goat Polyclonal Antibody

#### Product data:

Product Type:	Primary Antibodies
Applications:	WB
Recommended Dilution:	ELISA: 1:32,000. WB: 0.1-1.5µg/ml.
Reactivity:	Rat (Expected from sequence similarity: Human, Mouse, Dog, Pig)
Host:	Goat
Isotype:	IgG
Clonality:	Polyclonal
Immunogen:	Peptide with sequence C-TVQYSDDPRTEF, from the internal region of the protein sequence according to NP_000085.1.
Formulation:	Supplied at 0.5 mg/ml in Tris saline, 0.02% sodium azide, pH7.3 with 0.5% bovine serum albumin.
Concentration:	lot specific
Purification:	Purified from goat serum by ammonium sulphate precipitation followed by antigen affinity chromatography using the immunizing peptide. Supplied at 0.5 mg/ml in Tris saline, 0.02% sodium azide, pH7.3 with 0.5% bovine serum albumin. Aliquot and store at -20°C. Minimize freezing and thawing.
Conjugation:	Unconjugated
Storage:	Store at -20°C as received.
Stability:	Stable for 12 months from date of receipt.
Gene Name:	collagen, type VII, alpha 1
Database Link:	<a href="#">NP_001100328</a> <a href="#">Entrez Gene 1294 Human</a> <a href="#">Entrez Gene 12836 Mouse</a> <a href="#">Entrez Gene 403467 Dog</a> <a href="#">Entrez Gene 301012 Rat</a>



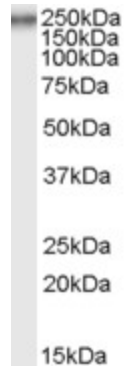
[View online »](#)

**Background:**

This gene encodes the alpha chain of type VII collagen. The type VII collagen fibril, composed of three identical alpha collagen chains, is restricted to the basement zone beneath stratified squamous epithelia. It functions as an anchoring fibril between the external epithelia and the underlying stroma. Mutations in this gene are associated with all forms of dystrophic epidermolysis bullosa. In the absence of mutations, however, an acquired form of this disease can result from an autoimmune response made to type VII collagen. [provided by RefSeq]

**Synonyms:**

EBD1; EBDCT; EBR1

**Product images:**

TA303034 (0.5ug/ml) staining of rat testis lysate (35ug protein in RIPA buffer). Primary incubation was 1 hour. Detected by chemiluminescence.