

Product datasheet for **TA303029**

CCKBR Goat Polyclonal Antibody

Product data:

Product Type:	Primary Antibodies
Applications:	IHC, WB
Recommended Dilution:	ELISA: 1:32,000. WB: 0.1-0.3µg/ml. IHC: 3µg/ml.IHC: 5µg/ml
Reactivity:	Human, Rat (Expected from sequence similarity: Mouse, Cow)
Host:	Goat
Isotype:	IgG
Clonality:	Polyclonal
Immunogen:	Peptide with sequence C-FDGSDSDSQSRVRNQ, from the internal region of the protein sequence according to NP_795344.1.
Formulation:	Supplied at 0.5 mg/ml in Tris saline, 0.02% sodium azide, pH7.3 with 0.5% bovine serum albumin.
Concentration:	lot specific
Purification:	Purified from goat serum by ammonium sulphate precipitation followed by antigen affinity chromatography using the immunizing peptide. Supplied at 0.5 mg/ml in Tris saline, 0.02% sodium azide, pH7.3 with 0.5% bovine serum albumin. Aliquot and store at -20°C. Minimize freezing and thawing.
Conjugation:	Unconjugated
Storage:	Store at -20°C as received.
Stability:	Stable for 12 months from date of receipt.
Gene Name:	cholecystokinin B receptor
Database Link:	NP_795344 Entrez Gene 12426 Mouse Entrez Gene 25706 Rat Entrez Gene 887 Human P32239



[View online »](#)

Background: This gene encodes a G-protein coupled receptor for gastrin and cholecystokinin (CCK), regulatory peptides of the brain and gastrointestinal tract. This protein is a type B gastrin receptor, which has a high affinity for both sulfated and nonsulfated CCK analogs and is found principally in the central nervous system and the gastrointestinal tract. A misspliced transcript variant including an intron has been observed in cells from colorectal and pancreatic tumors. [provided by RefSeq]

Synonyms: CCK-B; CCK2R; GASR

Protein Families: Druggable Genome, GPCR, Transmembrane

Protein Pathways: Calcium signaling pathway, Neuroactive ligand-receptor interaction

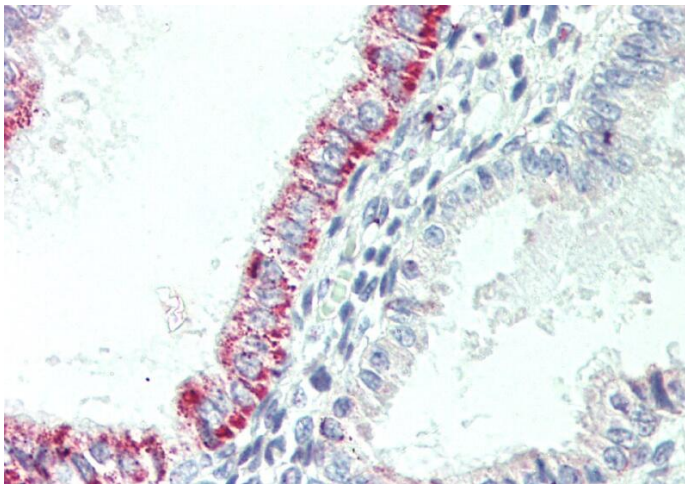
Product images:



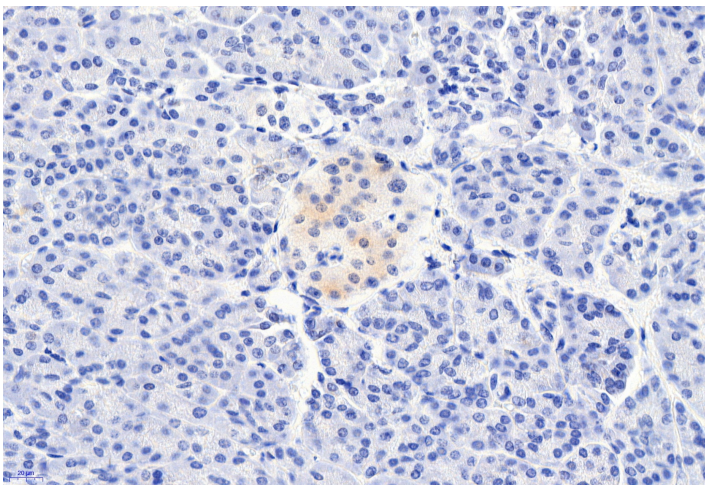
TA303029 (1ug/ml) staining of Mouse Pancreas lysate (35ug protein in RIPA buffer). Primary incubation was 1 hour. Detected by chemiluminescence.



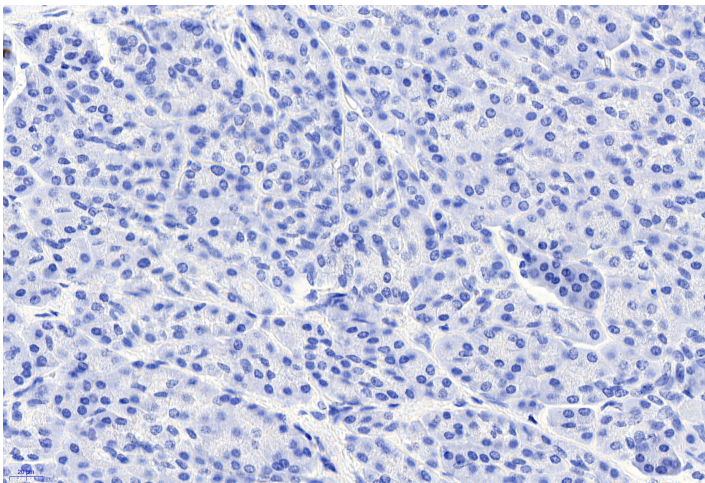
TA303029 (1ug/ml) staining of Mouse Pancreas (A) and Rat Stomach (B) lysate (35ug protein in RIPA buffer). Detected by chemiluminescence.



TA303029 (5ug/ml) staining of paraffin embedded Human Uterus. Steamed antigen retrieval with citrate buffer pH 6, AP-staining.



TA303029 (6ug/ml) staining of paraffin embedded Pancreas. Heat induced antigen retrieval with citrate buffer pH 6, HRP-staining.



TA303029 Negative Control showing staining of paraffin embedded Human Pancreas, with no primary antibody.