

Product datasheet for **TA303028**

MIF Goat Polyclonal Antibody

Product data:

Product Type:	Primary Antibodies
Applications:	WB
Recommended Dilution:	ELISA: 1.5-3ug/mL, WB: 0.01-0.03ug/mL
Reactivity:	Human (Expected from sequence similarity: Rat, Mouse)
Host:	Goat
Isotype:	IgG
Clonality:	Polyclonal
Immunogen:	Peptide with sequence C-NAANVGWNNSTFA, from the C Terminus of the protein sequence according to NP_002406.1.
Formulation:	Supplied at 0.5 mg/ml in Tris saline, 0.02% sodium azide, pH7.3 with 0.5% bovine serum albumin.
Concentration:	lot specific
Purification:	Purified from goat serum by ammonium sulphate precipitation followed by antigen affinity chromatography using the immunizing peptide. Supplied at 0.5 mg/ml in Tris saline, 0.02% sodium azide, pH7.3 with 0.5% bovine serum albumin. Aliquot and store at -20°C. Minimize freezing and thawing.
Conjugation:	Unconjugated
Storage:	Store at -20°C as received.
Stability:	Stable for 12 months from date of receipt.
Gene Name:	macrophage migration inhibitory factor (glycosylation-inhibiting factor)
Database Link:	NP_002406 Entrez Gene 17319 Mouse Entrez Gene 81683 Rat Entrez Gene 4282 Human P14174
Background:	This gene encodes a lymphokine involved in cell-mediated immunity, immunoregulation, and inflammation. It plays a role in the regulation of macrophage function in host defense through the suppression of anti-inflammatory effects of glucocorticoids. This lymphokine and the JAB1 protein form a complex in the cytosol near the peripheral plasma membrane, which may indicate an additional role in integrin signaling pathways. [provided by RefSeq]



[View online »](#)

Synonyms: GIF; GLIF; MMIF

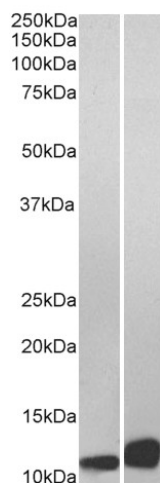
Protein Families: Druggable Genome

Protein Pathways: Phenylalanine metabolism, Tyrosine metabolism

Product images:



TA303028 (0.03ug/ml) staining of Human Thymus lysate (35ug protein in RIPA buffer). Primary incubation was 1 hour. Detected by chemiluminescence.



TA303028 (0.01ug/ml) staining of Daudi (A) and Jurkat (B) lysate (35ug protein in RIPA buffer). Primary incubation was 1 hour. Detected by chemiluminescence.