

Product datasheet for **TA303023**

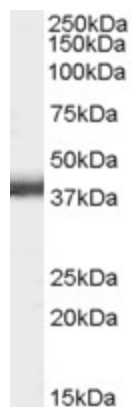
Renalase (RNLS) Goat Polyclonal Antibody

Product data:

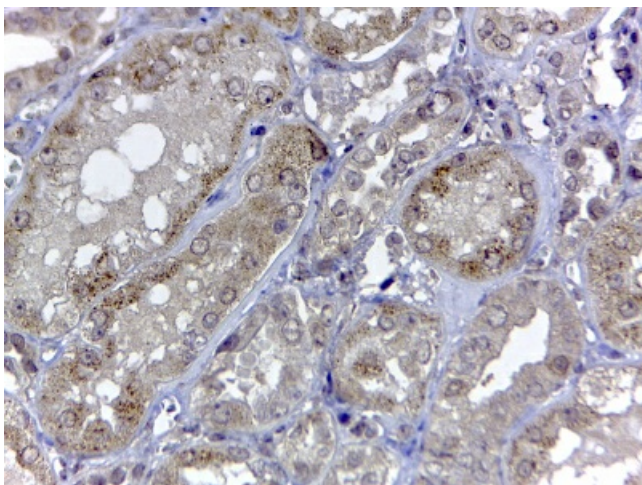
| | |
|-----------------------|--|
| Product Type: | Primary Antibodies |
| Applications: | IHC, WB |
| Recommended Dilution: | ELISA: 1:64,000, WB: 0.1-0.3ug/ml. IHC: 2-4ug/ml |
| Reactivity: | Human, Mouse (Expected from sequence similarity: Rat, Dog, Cow) |
| Host: | Goat |
| Isotype: | IgG |
| Clonality: | Polyclonal |
| Immunogen: | Peptide with sequence C-VSIDNKKRNI, from the internal region of the protein sequence according to NP_001026879.1; NP_060833.1. |
| Formulation: | Supplied at 0.5 mg/ml in Tris saline, 0.02% sodium azide, pH7.3 with 0.5% bovine serum albumin. |
| Concentration: | lot specific |
| Purification: | Purified from goat serum by ammonium sulphate precipitation followed by antigen affinity chromatography using the immunizing peptide. Supplied at 0.5 mg/ml in Tris saline, 0.02% sodium azide, pH7.3 with 0.5% bovine serum albumin. Aliquot and store at -20°C. Minimize freezing and thawing. |
| Conjugation: | Unconjugated |
| Storage: | Store at -20°C as received. |
| Stability: | Stable for 12 months from date of receipt. |
| Gene Name: | renalase, FAD-dependent amine oxidase |
| Database Link: | NP_001026879 Entrez Gene 67795 MouseEntrez Gene 361751 RatEntrez Gene 610448 DogEntrez Gene 55328 Human Q5VYX0 |
| Background: | Renalase is a flavin adenine dinucleotide-dependent amine oxidase that is secreted into the blood from the kidney (Xu et al., 2005 [PubMed 15841207]). [supplied by OMIM] |
| Synonyms: | C10orf59; RENALASE |
| Protein Families: | Secreted Protein |



[View online »](#)

Product images:

TA303023 (0.1ug/ml) staining of Mouse Kidney lysate (35ug protein in RIPA buffer). Primary incubation was 1 hour. Detected by chemiluminescence.



TA303023 (2ug/ml) staining of paraffin embedded Human Kidney. Steamed antigen retrieval with citrate buffer pH 6, HRP-staining.