

## Product datasheet for **TA303021**

### Serotonin transporter (SLC6A4) Goat Polyclonal Antibody

#### Product data:

Product Type:	Primary Antibodies
Applications:	WB
Recommended Dilution:	ELISA: 1:32,000. WB: 1-3µg/ml.
Reactivity:	Human, Rat (Expected from sequence similarity: Mouse)
Host:	Goat
Isotype:	IgG
Clonality:	Polyclonal
Immunogen:	Peptide with sequence C-LHQGERETWGK, from the internal region of the protein sequence according to NP_001036.1.
Formulation:	Supplied at 0.5 mg/ml in Tris saline, 0.02% sodium azide, pH7.3 with 0.5% bovine serum albumin.
Concentration:	lot specific
Purification:	Purified from goat serum by ammonium sulphate precipitation followed by antigen affinity chromatography using the immunizing peptide. Supplied at 0.5 mg/ml in Tris saline, 0.02% sodium azide, pH7.3 with 0.5% bovine serum albumin. Aliquot and store at -20°C. Minimize freezing and thawing.
Conjugation:	Unconjugated
Storage:	Store at -20°C as received.
Stability:	Stable for 12 months from date of receipt.
Gene Name:	solute carrier family 6 member 4
Database Link:	<a href="#">NP_001036</a> <a href="#">Entrez Gene 15567 Mouse</a> <a href="#">Entrez Gene 25553 Rat</a> <a href="#">Entrez Gene 6532 Human</a> <a href="#">P31645</a>



[View online »](#)

**Background:**

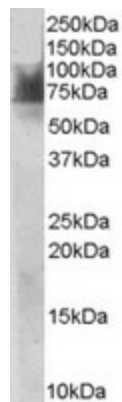
This gene encodes an integral membrane protein that transports the neurotransmitter serotonin from synaptic spaces into presynaptic neurons. The encoded protein terminates the action of serotonin and recycles it in a sodium-dependent manner. This protein is a target of psychomotor stimulants, such as amphetamines and cocaine, and is a member of the sodium:neurotransmitter symporter family. A repeat length polymorphism in the promoter of this gene has been shown to affect the rate of serotonin uptake and may play a role in sudden infant death syndrome, aggressive behavior in Alzheimer disease patients, and depression-susceptibility in people experiencing emotional trauma. [provided by RefSeq]

**Synonyms:**

5-HTT; 5-HTTLPR; 5HTT; hSERT; HTT; OCD1; SERT; SERT1

**Protein Families:**

Druggable Genome, Transmembrane

**Product images:**


TA303021 staining (1ug/ml) of Human Duodenum lysate (RIPA buffer, 30ug total protein per lane). Primary incubated for 1 hour. Detected by western blot using chemiluminescence.