

Product datasheet for **TA303014**

PAI1 (SERPINE1) Goat Polyclonal Antibody

Product data:

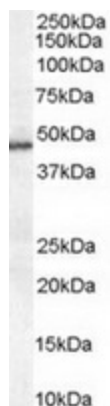
Product Type:	Primary Antibodies
Applications:	IHC, WB
Recommended Dilution:	WB: 0.1-0.3ug/mL; IHC: 4-6ug/mL
Reactivity:	Human (Expected from sequence similarity: Dog)
Host:	Goat
Isotype:	IgG
Clonality:	Polyclonal
Immunogen:	Peptide with sequence C-GFKIDDKGMAPALRH, from the internal region of the protein sequence according to NP_000593.1.
Formulation:	Supplied at 0.5 mg/ml in Tris saline, 0.02% sodium azide, pH7.3 with 0.5% bovine serum albumin.
Concentration:	lot specific
Purification:	Purified from goat serum by ammonium sulphate precipitation followed by antigen affinity chromatography using the immunizing peptide. Supplied at 0.5 mg/ml in Tris saline, 0.02% sodium azide, pH7.3 with 0.5% bovine serum albumin. Aliquot and store at -20°C. Minimize freezing and thawing.
Conjugation:	Unconjugated
Storage:	Store at -20°C as received.
Stability:	Stable for 12 months from date of receipt.
Gene Name:	serpin family E member 1
Database Link:	NP_000593 Entrez Gene 403476 Dog Entrez Gene 5054 Human P05121
Background:	This inhibitor acts as 'bait' for tissue plasminogen activator, urokinase, and protein C. Its rapid interaction with TPA may function as a major control point in the regulation of fibrinolysis
Synonyms:	PAI; PAI-1; PAI1; PLANH1
Protein Families:	Druggable Genome, Secreted Protein



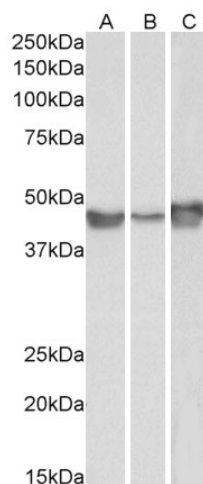
[View online »](#)

Protein Pathways: Complement and coagulation cascades, p53 signaling pathway

Product images:



TA303014 (0.1ug/ml) staining of Human Liver lysate (35ug protein in RIPA buffer). Primary incubation was 1 hour. Detected by chemiluminescence.



TA303014 (0.1ug/ml) staining of A549 (A), HepG2 (B) and HeLa (C) lysates (35ug protein in RIPA buffer). Primary incubation was 1 hour. Detected by chemiluminescence.

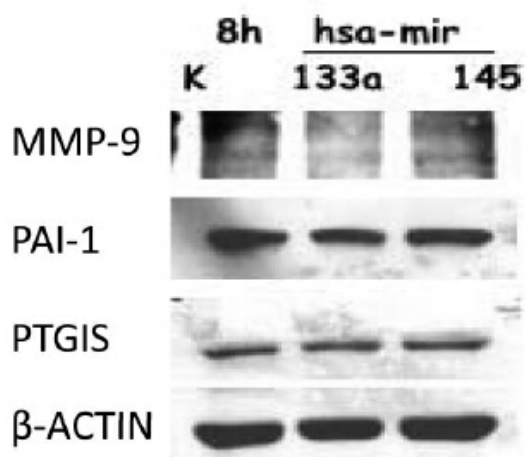
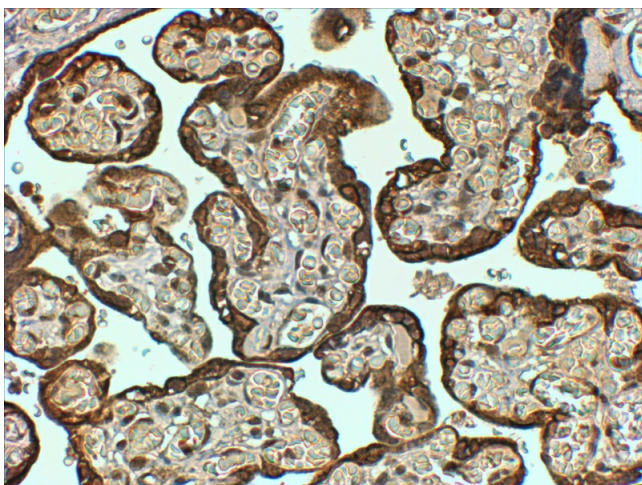


Figure from citation: Western Blot of SERPINE1 (PAI-1) protein level by using anti-SERPINE1 antibody in HUVECs. [View Citation](#)



TA303014 (4ug/ml) staining of paraffin embedded Human Placenta. Steamed antigen retrieval with Tris/EDTA buffer pH 9, HRP-staining.