

Product datasheet for **TA303008**

Nucleophosmin (NPM1) Goat Polyclonal Antibody

Product data:

Product Type:	Primary Antibodies
Applications:	WB
Recommended Dilution:	WB: 0.03-0.1 ug/mL
Reactivity:	Human, Mouse, Rat (Expected from sequence similarity: Dog, Cow)
Host:	Goat
Isotype:	IgG
Clonality:	Polyclonal
Immunogen:	Peptide with sequence C-QEAIQDLWQWRKSL, from the C Terminus of the protein sequence according to NP_002511.1; NP_954654.1.
Formulation:	Supplied at 0.5 mg/ml in Tris saline, 0.02% sodium azide, pH7.3 with 0.5% bovine serum albumin.
Concentration:	lot specific
Purification:	Purified from goat serum by ammonium sulphate precipitation followed by antigen affinity chromatography using the immunizing peptide. Supplied at 0.5 mg/ml in Tris saline, 0.02% sodium azide, pH7.3 with 0.5% bovine serum albumin. Aliquot and store at -20°C. Minimize freezing and thawing.
Conjugation:	Unconjugated
Storage:	Store at -20°C as received.
Stability:	Stable for 12 months from date of receipt.
Gene Name:	nucleophosmin (nucleolar phosphoprotein B23, numatrin)
Database Link:	NP_001032827 Entrez Gene 18148 MouseEntrez Gene 25498 RatEntrez Gene 479292 DogEntrez Gene 4869 Human P06748



[View online »](#)

Background:

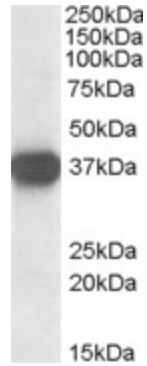
NPM1 is a ubiquitously expressed nucleolar protein that shuttles between the nucleus and cytoplasm. It is implicated in multiple functions, including ribosomal protein assembly and transport, control of centrosome duplication, and regulation of the tumor suppressor ARF (MIM 600160). NPM1 mutations that relocalize NPM1 from the nucleus into the cytoplasm are associated with development of acute myeloid leukemia (AML; MIM 601626) (Garzon et al., 2008 [PubMed 18308931]). [supplied by OMIM]

Synonyms:

B23; NPM

Protein Families:

Druggable Genome, Stem cell - Pluripotency, Transcription Factors

Product images:

TA303008 staining (0.1 ug/ml) of Jurkat lysate (RIPA buffer, 35ug total protein per lane). Primary incubated for 1 hour. Detected by western blot using chemiluminescence.