

## Product datasheet for **TA303001**

### Asporin (ASPN) Goat Polyclonal Antibody

#### Product data:

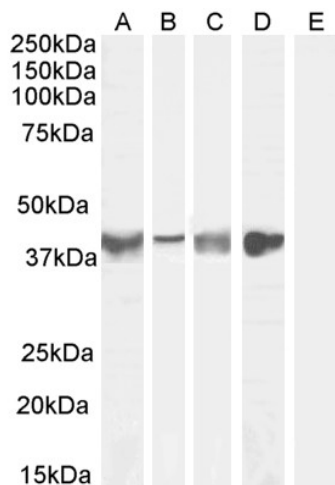
Product Type:	Primary Antibodies
Applications:	IF, WB
Recommended Dilution:	ELISA: 1:64000. WB: 0.1-1µg/ml.IF:10µg/ml
Reactivity:	Human, Mouse (Expected from sequence similarity: Rat)
Host:	Goat
Isotype:	IgG
Clonality:	Polyclonal
Immunogen:	Peptide with sequence C-IHENKVKKIQKDT, from the internal region of the protein sequence according to NP_060150.3.
Formulation:	Supplied at 0.5 mg/ml in Tris saline, 0.02% sodium azide, pH7.3 with 0.5% bovine serum albumin.
Concentration:	lot specific
Purification:	Purified from goat serum by ammonium sulphate precipitation followed by antigen affinity chromatography using the immunizing peptide. Supplied at 0.5 mg/ml in Tris saline, 0.02% sodium azide, pH7.3 with 0.5% bovine serum albumin. Aliquot and store at -20°C. Minimize freezing and thawing.
Conjugation:	Unconjugated
Storage:	Store at -20°C as received.
Stability:	Stable for 12 months from date of receipt.
Gene Name:	asporin
Database Link:	<a href="#">NP_060150</a> <a href="#">Entrez Gene 66695 Mouse</a> <a href="#">Entrez Gene 306805 Rat</a> <a href="#">Entrez Gene 54829 Human</a> <a href="#">Q9BXN1</a>
Background:	ASPN belongs to a family of leucine-rich repeat (LRR) proteins associated with the cartilage matrix. The name asporin reflects the unique aspartate-rich N terminus and the overall similarity to decorin (MIM 125255) (Lorenzo et al., 2001 [PubMed 11152692]). [supplied by OMIM]
Synonyms:	OS3; PLAP-1; PLAP1; SLRR1C



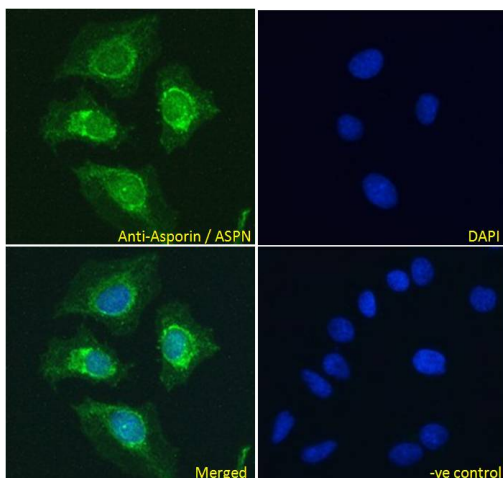
[View online »](#)

Protein Families:            Secreted Protein

**Product images:**



TA303001 (0.1ug/ml) staining of Human Tonsil (A), (0.3ug/ml) Human Uterus (B), Mouse Skeletal Muscle (C) (1ug/ml) Rat Skeletal Muscle (D) and negative control Human Cerebellum (E) lysate (35ug protein in RIPA buffer). Detected by chemiluminescence.



TA303001 Immunofluorescence analysis of paraformaldehyde fixed HeLa cells, permeabilized with 0.15% Triton. Primary incubation 1hr (10ug/ml) followed by Alexa Fluor 488 secondary antibody (4ug/ml), showing nuclear membrane staining. The nuclear stain is DAPI (blue). Negative control: Unimmunized goat IgG (10ug/ml) followed by Alexa Fluor 488 secondary antibody (4ug/ml).