

Product datasheet for **TA302993**

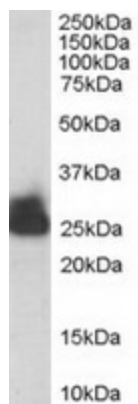
Triosephosphate isomerase (TPI1) Goat Polyclonal Antibody

Product data:

Product Type:	Primary Antibodies
Applications:	WB
Recommended Dilution:	ELISA: 1:16,000. WB: 0.01-0.03µg/ml.
Reactivity:	Human, Mouse (Expected from sequence similarity: Rat, Dog, Cow)
Host:	Goat
Isotype:	IgG
Clonality:	Polyclonal
Immunogen:	Peptide with sequence C-LKPEFVDIINAKQ, from the C Terminus of the protein sequence according to NP_000356.
Formulation:	Supplied at 0.5 mg/ml in Tris saline, 0.02% sodium azide, pH7.3 with 0.5% bovine serum albumin.
Concentration:	lot specific
Purification:	Purified from goat serum by ammonium sulphate precipitation followed by antigen affinity chromatography using the immunizing peptide. Supplied at 0.5 mg/ml in Tris saline, 0.02% sodium azide, pH7.3 with 0.5% bovine serum albumin. Aliquot and store at -20°C. Minimize freezing and thawing.
Conjugation:	Unconjugated
Storage:	Store at -20°C as received.
Stability:	Stable for 12 months from date of receipt.
Gene Name:	triosephosphate isomerase 1
Database Link:	NP_000356 Entrez Gene 21991 MouseEntrez Gene 24849 RatEntrez Gene 477711 DogEntrez Gene 7167 Human P60174
Background:	triosephosphate isomerase 1
Synonyms:	HEL-S-49; TIM; TPI; TPID
Protein Pathways:	Fructose and mannose metabolism, Glycolysis / Gluconeogenesis, Inositol phosphate metabolism, Metabolic pathways



[View online »](#)

Product images:

TA302993 staining (0.003ug/ml) of human liver lysate (RIPA buffer, 30ug total protein per lane). Primary incubated for 1 hour. Detected by western blot using chemiluminescence.