

## Product datasheet for **TA302976**

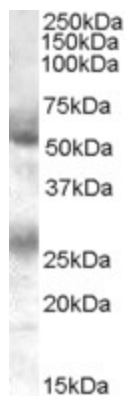
### FLVCR (FLVCR1) Goat Polyclonal Antibody

#### Product data:

Product Type:	Primary Antibodies
Applications:	WB
Recommended Dilution:	ELISA: 1:128,000. WB: 0.1-0.3µg/ml.
Reactivity:	Human
Host:	Goat
Isotype:	IgG
Clonality:	Polyclonal
Immunogen:	Peptide with sequence C-KTVMLSKQSESAI, from the C Terminus of the protein sequence according to NP_054772.1.
Formulation:	Supplied at 0.5 mg/ml in Tris saline, 0.02% sodium azide, pH7.3 with 0.5% bovine serum albumin.
Concentration:	lot specific
Purification:	Purified from goat serum by ammonium sulphate precipitation followed by antigen affinity chromatography using the immunizing peptide. Supplied at 0.5 mg/ml in Tris saline, 0.02% sodium azide, pH7.3 with 0.5% bovine serum albumin. Aliquot and store at -20°C. Minimize freezing and thawing.
Conjugation:	Unconjugated
Storage:	Store at -20°C as received.
Stability:	Stable for 12 months from date of receipt.
Gene Name:	feline leukemia virus subgroup C cellular receptor 1
Database Link:	<a href="#">NP_054772</a> <a href="#">Entrez Gene 28982 Human</a> <a href="#">Q9Y5Y0</a>
Background:	Exports cytoplasmic heme. May be required to protect developing erythroid cells from heme toxicity. Causes susceptibility to FeLV-C in vitro
Synonyms:	AXPC1; FLVCR; MFSD7B; PCA; PCARP
Protein Families:	Druggable Genome, Transmembrane



[View online »](#)

**Product images:**

TA302976 (0.1ug/ml) staining of Human Bone Marrow lysate (35ug protein in RIPA buffer). Primary incubation was 1 hour. Detected by chemiluminescence.