

Product datasheet for **TA302974**

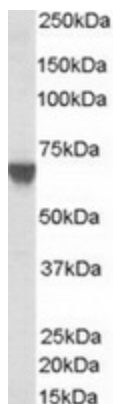
TOM1L2 Goat Polyclonal Antibody

Product data:

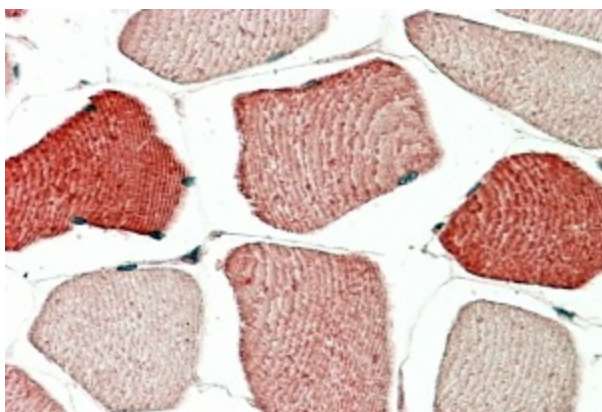
Product Type:	Primary Antibodies
Applications:	IHC, WB
Recommended Dilution:	ELISA: 1:64,000. WB: 0.1-1ug/ml. IHC: 5-10ug/ml
Reactivity:	Human (Expected from sequence similarity: Mouse, Dog)
Host:	Goat
Isotype:	IgG
Clonality:	Polyclonal
Immunogen:	Peptide with sequence CRKKPERSEDALFAL, from the C Terminus of the protein sequence according to NP_653279.
Formulation:	Supplied at 0.5 mg/ml in Tris saline, 0.02% sodium azide, pH7.3 with 0.5% bovine serum albumin.
Concentration:	lot specific
Purification:	Purified from goat serum by ammonium sulphate precipitation followed by antigen affinity chromatography using the immunizing peptide. Supplied at 0.5 mg/ml in Tris saline, 0.02% sodium azide, pH7.3 with 0.5% bovine serum albumin. Aliquot and store at -20°C. Minimize freezing and thawing.
Conjugation:	Unconjugated
Storage:	Store at -20°C as received.
Stability:	Stable for 12 months from date of receipt.
Gene Name:	target of myb1 like 2 membrane trafficking protein
Database Link:	NP_001028723 Entrez Gene 216810 Mouse Entrez Gene 489540 Dog Entrez Gene 146691 Human Q6ZVM7
Background:	Probable role in protein transport. May regulate growth factor-induced mitogenic signaling
Synonyms:	FLJ21501; FLJ32746



[View online »](#)

Product images:

TA302974 (0.03ug/ml) staining of A431 lysate (35ug protein in RIPA buffer). Primary incubation was 1 hour. Detected by chemiluminescence.



TA302974 (5ug/ml) staining of paraffin embedded Human Skeletal Muscle. Steamed antigen retrieval with citrate buffer pH 6, AP-staining.