

## Product datasheet for **TA302968**

### PRDM4 Goat Polyclonal Antibody

#### Product data:

Product Type:	Primary Antibodies
Applications:	WB
Recommended Dilution:	ELISA: 1:64,000. WB: 0.3-2µg/ml.
Reactivity:	Human, Mouse (Expected from sequence similarity: Rat, Dog, Pig, Cow)
Host:	Goat
Isotype:	IgG
Clonality:	Polyclonal
Immunogen:	Peptide with sequence CSAVYSADESLSAHK, from the C Terminus of the protein sequence according to NP_036538.
Formulation:	Supplied at 0.5 mg/ml in Tris saline, 0.02% sodium azide, pH7.3 with 0.5% bovine serum albumin.
Concentration:	lot specific
Purification:	Purified from goat serum by ammonium sulphate precipitation followed by antigen affinity chromatography using the immunizing peptide. Supplied at 0.5 mg/ml in Tris saline, 0.02% sodium azide, pH7.3 with 0.5% bovine serum albumin. Aliquot and store at -20°C. Minimize freezing and thawing.
Conjugation:	Unconjugated
Storage:	Store at -20°C as received.
Stability:	Stable for 12 months from date of receipt.
Gene Name:	PR domain 4
Database Link:	<a href="#">NP_036538</a> <a href="#">Entrez Gene 72843 Mouse</a> <a href="#">Entrez Gene 170820 Rat</a> <a href="#">Entrez Gene 481291 Dog</a> <a href="#">Entrez Gene 11108 Human</a> <a href="#">Q9UKN5</a>



[View online »](#)

**Background:**

The protein encoded by this gene is a transcription factor of the PR-domain protein family. It contains a PR-domain and multiple zinc finger motifs. Transcription factors of the PR-domain family are known to be involved in cell differentiation and tumorigenesis. An elevated expression level of this gene has been observed in PC12 cells treated with nerve growth factor, beta polypeptide (NGF). This gene is located in a chromosomal region that is thought to contain tumor suppressor genes. COMPLETENESS: complete on the 3' end.

**Synonyms:**

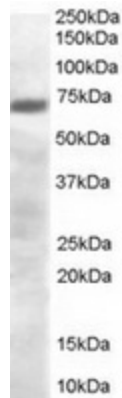
PFM1

**Protein Families:**

Transcription Factors

**Protein Pathways:**

Neurotrophin signaling pathway

**Product images:**

TA302968 (0.3ug/ml) staining of human brain lysate (35ug protein in RIPA buffer). Primary incubation was 1 hour. Detected by chemiluminescence.