

Product datasheet for **TA302965**

LXR beta (NR1H2) Goat Polyclonal Antibody

Product data:

Product Type:	Primary Antibodies
Applications:	WB
Recommended Dilution:	ELISA: 1:64,000. WB: 1-3µg/ml.
Reactivity:	Human (Expected from sequence similarity: Mouse, Rat, Dog)
Host:	Goat
Isotype:	IgG
Clonality:	Polyclonal
Immunogen:	Peptide with sequence SSPTTSSLDTPLPGC, from the N Terminus of the protein sequence according to NP_009052.
Formulation:	Supplied at 0.5 mg/ml in Tris saline, 0.02% sodium azide, pH7.3 with 0.5% bovine serum albumin.
Concentration:	lot specific
Purification:	Purified from goat serum by ammonium sulphate precipitation followed by antigen affinity chromatography using the immunizing peptide. Supplied at 0.5 mg/ml in Tris saline, 0.02% sodium azide, pH7.3 with 0.5% bovine serum albumin. Aliquot and store at -20°C. Minimize freezing and thawing.
Conjugation:	Unconjugated
Storage:	Store at -20°C as received.
Stability:	Stable for 12 months from date of receipt.
Gene Name:	nuclear receptor subfamily 1 group H member 2
Database Link:	NP_009052 Entrez Gene 22260 Mouse Entrez Gene 58851 Rat Entrez Gene 610057 Dog Entrez Gene 7376 Human P55055



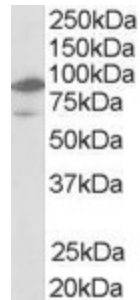
[View online »](#)

Background: The LX receptors (LXRs) were originally identified as orphan members of the nuclear receptor superfamily because their ligands were unknown. Like other receptors in the family, LXRs heterodimerize with retinoid X receptor (see MIM 180245) and bind to specific response elements (LXREs) characterized by direct repeats separated by 4 nucleotides. Two genes, alpha (LXRA, MIM 602423) and beta, are known to encode LXR proteins (Song et al., 1995 [PubMed 7625741]). [supplied by OMIM]

Synonyms: LXR-b; LXRβ; NER; NER-I; RIP15; UNR

Protein Families: Druggable Genome, Nuclear Hormone Receptor, Transcription Factors

Product images:



TA302965 (1ug/ml) staining of human bone marrow lysate (35ug protein in RIPA buffer). Primary incubation was 1 hour. Detected by chemiluminescence.