

Product datasheet for **TA302961**

SCARF1 Goat Polyclonal Antibody

Product data:

Product Type:	Primary Antibodies
Applications:	WB
Recommended Dilution:	ELISA: 1:64,000. WB: 0.3-1.0µg/ml.
Reactivity:	Human
Host:	Goat
Isotype:	IgG
Clonality:	Polyclonal
Immunogen:	Peptide with sequence SELDPKGQHVC, from the internal region of the protein sequence according to NP_003684; NP_663324; NP_663325; NP_663326; NP_663327.
Formulation:	Supplied at 0.5 mg/ml in Tris saline, 0.02% sodium azide, pH7.3 with 0.5% bovine serum albumin.
Concentration:	lot specific
Purification:	Purified from goat serum by ammonium sulphate precipitation followed by antigen affinity chromatography using the immunizing peptide. Supplied at 0.5 mg/ml in Tris saline, 0.02% sodium azide, pH7.3 with 0.5% bovine serum albumin. Aliquot and store at -20°C. Minimize freezing and thawing.
Conjugation:	Unconjugated
Storage:	Store at -20°C as received.
Stability:	Stable for 12 months from date of receipt.
Gene Name:	scavenger receptor class F member 1
Database Link:	NP_003684 Entrez Gene 8578 Human Q14162
Background:	The protein encoded by this gene is a scavenger receptor that is expressed in endothelial cells and mediates the binding and degradation of acetylated low density lipoprotein (Ac-LDL). Transcription factors ZNF444/EZF-2 and SP1 are found to be responsible for the regulation of this gene. Five alternatively spliced transcript variants encoding distinct isoforms have been described.

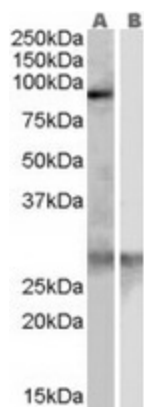


[View online »](#)

Synonyms: SREC; SREC-I; SREC1

Protein Families: Druggable Genome

Product images:



TA302961 (0.3ug/ml) staining of Human Heart lysate (35ug protein in RIPA buffer) with (B) and without (A) blocking with the immunising peptide. Primary incubation was 1 hour. Detected by chemiluminescence.