

## Product datasheet for **TA302946**

### CPEB1 Goat Polyclonal Antibody

#### Product data:

Product Type:	Primary Antibodies
Applications:	WB
Recommended Dilution:	ELISA: 1:128,000. WB: 0.5-2µg/ml.
Reactivity:	Human (Expected from sequence similarity: Cow)
Host:	Goat
Isotype:	IgG
Clonality:	Polyclonal
Immunogen:	Peptide with sequence C-PLMRNQKNRDSS, from the C Terminus of the protein sequence according to NP_085097.
Formulation:	Supplied at 0.5 mg/ml in Tris saline, 0.02% sodium azide, pH7.3 with 0.5% bovine serum albumin.
Concentration:	lot specific
Purification:	Purified from goat serum by ammonium sulphate precipitation followed by antigen affinity chromatography using the immunizing peptide. Supplied at 0.5 mg/ml in Tris saline, 0.02% sodium azide, pH7.3 with 0.5% bovine serum albumin. Aliquot and store at -20°C. Minimize freezing and thawing.
Conjugation:	Unconjugated
Storage:	Store at -20°C as received.
Stability:	Stable for 12 months from date of receipt.
Gene Name:	cytoplasmic polyadenylation element binding protein 1
Database Link:	<a href="#">NP_001073001</a> <a href="#">Entrez Gene 64506 Human</a> <a href="#">Q9BZB8</a>



[View online »](#)

**Background:**

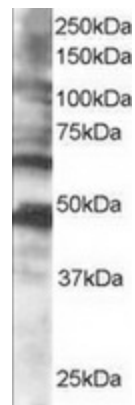
This gene encodes a member of the cytoplasmic polyadenylation element (CPE) binding protein family. This highly conserved protein binds to a specific RNA sequence called the CPE found in the 3' UTR of some mRNAs. Similar proteins in *Xenopus* and mouse function to induce cytoplasmic polyadenylation of dormant mRNAs with short polyA tails, resulting in their translation. Members of this protein family regulate translation of cyclin B1 during embryonic cell divisions. Multiple transcript variants encoding different isoforms have been found for this gene. [provided by RefSeq]

**Synonyms:**

CPE-BP1; CPEB; CPEB-1; h-CPEB; hCPEB-1

**Protein Pathways:**

Dorso-ventral axis formation, Oocyte meiosis, Progesterone-mediated oocyte maturation

**Product images:**

TA302946 staining (0.5ug/ml) of human brain lysate (RIPA buffer, 35ug total protein per lane). Primary incubated for 1 hour. Detected by western blot using chemiluminescence.