

## Product datasheet for **TA302944**

### GAPDH Goat Polyclonal Antibody

#### Product data:

Product Type:	Primary Antibodies
Recommended Dilution:	ELISA:1:128000.WB:0.01-0.5µg/ml.IHC: 5µg/ml. IHC: 5µg/ml.
Reactivity:	Human, Mouse, Rat (Expected from sequence similarity: Dog)
Host:	Goat
Isotype:	IgG
Clonality:	Polyclonal
Immunogen:	Peptide with sequence C-HQVSSDFNSDT, from the C Terminus of the protein sequence according to NP_002037.2.
Formulation:	Supplied at 0.5 mg/ml in Tris saline, 0.02% sodium azide, pH7.3 with 0.5% bovine serum albumin.
Concentration:	0.5 mg/ml
Purification:	Purified from goat serum by ammonium sulphate precipitation followed by antigen affinity chromatography using the immunizing peptide. Supplied at 0.5 mg/ml in Tris saline, 0.02% sodium azide, pH7.3 with 0.5% bovine serum albumin. Aliquot and store at -20°C. Minimize freezing and thawing.
Conjugation:	Unconjugated
Storage:	Store at -20°C as received.
Stability:	Stable for 12 months from date of receipt.
Gene Name:	glyceraldehyde-3-phosphate dehydrogenase
Database Link:	<a href="#">NP_002037</a> <a href="#">Entrez Gene 14433 Mouse</a> <a href="#">Entrez Gene 24383 Rat</a> <a href="#">Entrez Gene 403755 Dog</a> <a href="#">Entrez Gene 2597 Human</a> <a href="#">P04406</a>
Background:	The product of this gene catalyzes an important energy-yielding step in carbohydrate metabolism, the reversible oxidative phosphorylation of glyceraldehyde-3-phosphate in the presence of inorganic phosphate and nicotinamide adenine dinucleotide (NAD). The enzyme exists as a tetramer of identical chains. Many pseudogenes similar to this locus are present in the human genome. [provided by RefSeq]



[View online »](#)

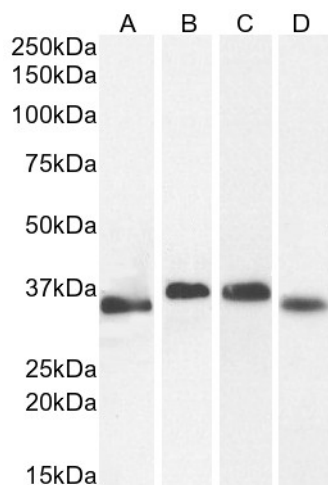
**Synonyms:** G3PD; GAPD; HEL-S-162eP

**Note:** In paraffin embedded Human Tonsil, staining of cells in germinal centre, mantle zone, interfollicular area, epithelium and endothelium is observed

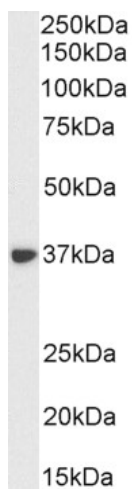
**Protein Families:** ES Cell Differentiation/IPS

**Protein Pathways:** Alzheimer's disease, Glycolysis / Gluconeogenesis, Metabolic pathways

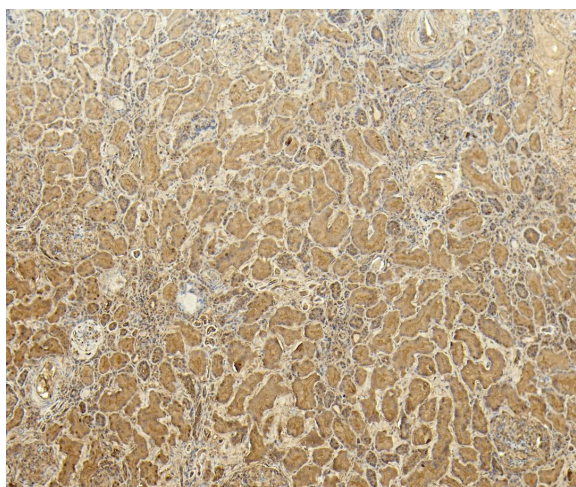
**Product images:**



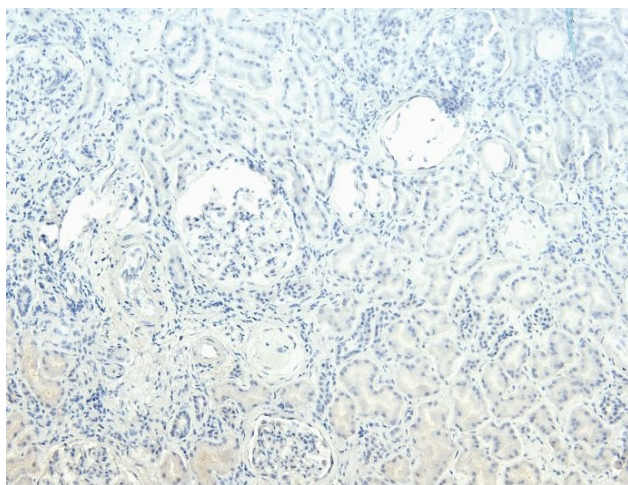
TA302944 (0.1µg/ml) staining of HEK293 (A), HeLa (B) and A549 (C) and (0.01 ug/ml) LNCaP (D) cell lysate (35µg protein in RIPA buffer). Detected by chemiluminescence.



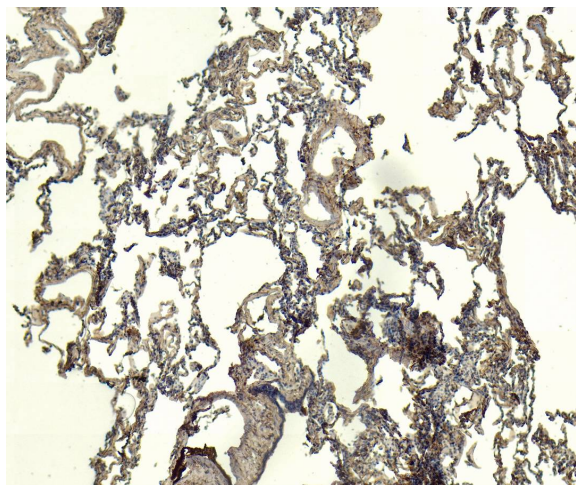
TA302944 (0.1µg/ml) staining of Human Liver lysate (35µg protein in RIPA buffer). Detected by chemiluminescence.



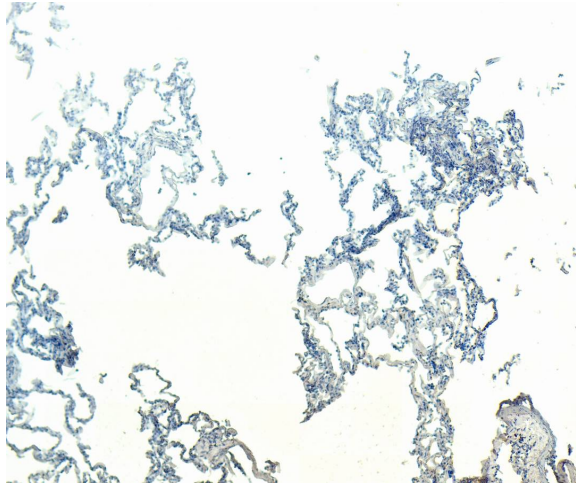
TA302944 (4 $\mu$ g/ml) staining of paraffin embedded Human Kidney. Heat induced antigen retrieval with citrate buffer pH 6, HRP-staining.



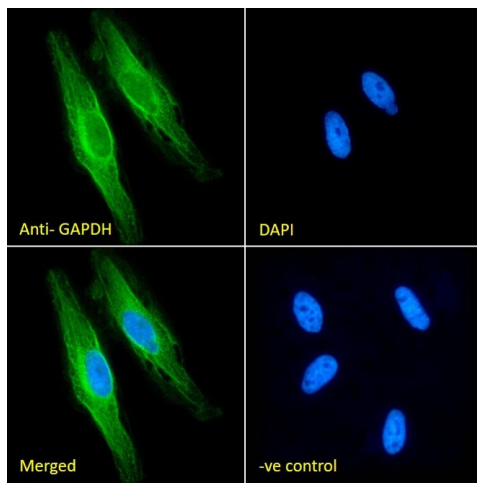
TA302944 Negative Control showing staining of paraffin embedded Human Kidney, with no primary antibody.



TA302944 (5 $\mu$ g/ml) staining of paraffin embedded Human Lung. Heat induced antigen retrieval with citrate buffer pH 6, HRP-staining.



TA302944 Negative Control showing staining of paraffin embedded Human Lung, with no primary antibody.



TA302944 Immunofluorescence analysis of paraformaldehyde fixed HeLa cells, permeabilized with 0.15% Triton. Primary incubation 1hr (10ug/ml) followed by Alexa Fluor 488 secondary antibody (2ug/ml), showing membrane and cytoplasmic staining. The nuclear stain is DAPI (blue). Negative control: Unimmunized goat IgG (10ug/ml) followed by Alexa Fluor 488 secondary antibody (2ug/ml).