

## Product datasheet for **TA302938**

### PAX3 Goat Polyclonal Antibody

#### Product data:

Product Type:	Primary Antibodies
Applications:	IHC, WB
Recommended Dilution:	ELISA: 1:64,000. WB: 3µg/ml.
Reactivity:	Human (Expected from sequence similarity: Mouse, Rat, Cow)
Host:	Goat
Isotype:	IgG
Clonality:	Polyclonal
Immunogen:	Peptide with sequence TLAGAVPRMM-C, from the N Terminus of the protein sequence according to NP_000429.2; NP_039230.1; NP_852122;.1 NP_852123.1; NP_852124.1; NP_852125.1; NP_852126.1.
Formulation:	Supplied at 0.5 mg/ml in Tris saline, 0.02% sodium azide, pH7.3 with 0.5% bovine serum albumin.
Concentration:	lot specific
Purification:	Purified from goat serum by ammonium sulphate precipitation followed by antigen affinity chromatography using the immunizing peptide. Supplied at 0.5 mg/ml in Tris saline, 0.02% sodium azide, pH7.3 with 0.5% bovine serum albumin. Aliquot and store at -20°C. Minimize freezing and thawing.
Conjugation:	Unconjugated
Storage:	Store at -20°C as received.
Stability:	Stable for 12 months from date of receipt.
Gene Name:	paired box 3
Database Link:	<a href="#">NP_000429</a> <a href="#">Entrez Gene 18505 Mouse</a> <a href="#">Entrez Gene 114502 Rat</a> <a href="#">Entrez Gene 5077 Human</a> <a href="#">P23760</a>



[View online »](#)

**Background:**

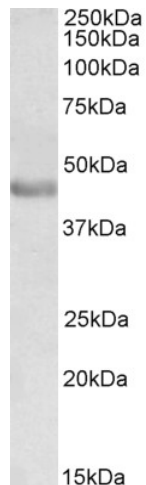
This gene is a member of the paired box (PAX) family of transcription factors. Members of the PAX family typically contain a paired box domain and a paired-type homeodomain. These genes play critical roles during fetal development. Mutations in paired box gene 3 are associated with Waardenburg syndrome, craniofacial-deafness-hand syndrome, and alveolar rhabdomyosarcoma. The translocation t(2;13)(q35;q14), which represents a fusion between PAX3 and the forkhead gene, is a frequent finding in alveolar rhabdomyosarcoma. Alternative splicing results in transcripts encoding isoforms with different C-termini. [provided by RefSeq]

**Synonyms:**

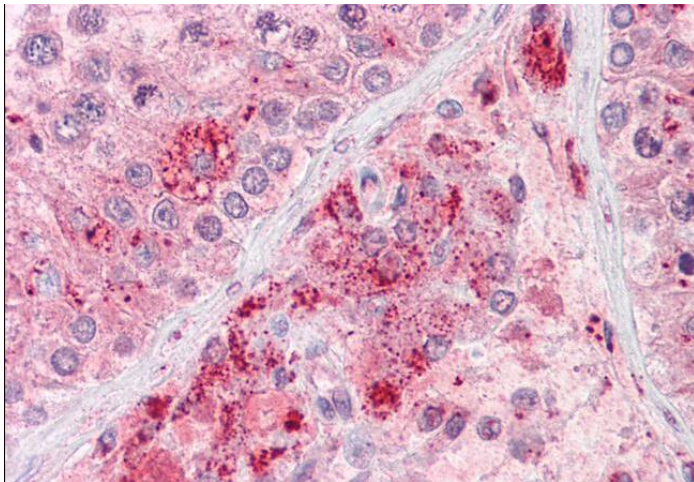
CDHS; HUP2; WS1; WS3

**Protein Families:**

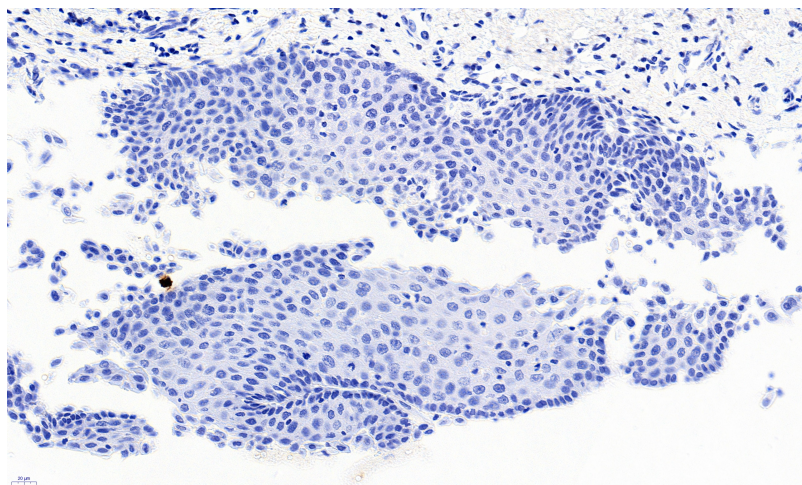
Adult stem cells, Druggable Genome, Embryonic stem cells, ES Cell Differentiation/IPS, Transcription Factors

**Product images:**

TA302938 (0.3ug/ml) staining of Human Duodenum lysate (35ug protein in RIPA buffer). Detected by chemiluminescence.



TA302938 (4.5ug/ml) staining of paraffin embedded Human Esophagus. Heat induced antigen retrieval with citrate buffer pH 6, HRP-staining.



TA302938 Negative Control showing staining of paraffin embedded Human Esophagus, with no primary antibody.