

## Product datasheet for **TA302937**

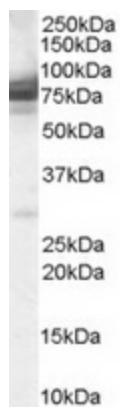
### CMG1 (IFT74) Goat Polyclonal Antibody

#### Product data:

Product Type:	Primary Antibodies
Applications:	WB
Recommended Dilution:	ELISA: 1:16,000. WB: 0.3-1µg/ml. IHC: 5-10µg/ml. IF: 2.5mg/ml
Reactivity:	Human, Rat
Host:	Goat
Isotype:	IgG
Clonality:	Polyclonal
Immunogen:	Peptide with sequence C-KTIVDALHSTSGN, from the C Terminus of the protein sequence according to NP_079379.1; AAK77221.1.
Formulation:	Supplied at 0.5 mg/ml in Tris saline, 0.02% sodium azide, pH7.3 with 0.5% bovine serum albumin.
Concentration:	lot specific
Purification:	Purified from goat serum by ammonium sulphate precipitation followed by antigen affinity chromatography using the immunizing peptide. Supplied at 0.5 mg/ml in Tris saline, 0.02% sodium azide, pH7.3 with 0.5% bovine serum albumin. Aliquot and store at -20°C. Minimize freezing and thawing.
Conjugation:	Unconjugated
Storage:	Store at -20°C as received.
Stability:	Stable for 12 months from date of receipt.
Gene Name:	intraflagellar transport 74
Database Link:	<a href="#">NP_001092692</a> <a href="#">Entrez Gene 313365 Rat</a> <a href="#">Entrez Gene 80173 Human</a> <a href="#">Q96LB3</a>
Background:	Capillary morphogenesis protein 1
Synonyms:	BBS20; CCDC2; CMG-1; CMG1



[View online »](#)

**Product images:**

TA302937 staining (0.3ug/ml) of 293 lysate (RIPA buffer, 35ug total protein per lane). Primary incubated for 1 hour. Detected by western blot using chemiluminescence.