

Product datasheet for **TA302930**

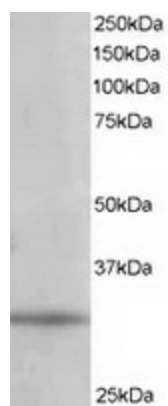
PITPN (PITPNA) Goat Polyclonal Antibody

Product data:

Product Type:	Primary Antibodies
Applications:	WB
Recommended Dilution:	ELISA: 1:4,000. WB: 1-3µg/ml.
Reactivity:	Human (Expected from sequence similarity: Mouse, Rat, Dog, Cow)
Host:	Goat
Isotype:	IgG
Clonality:	Polyclonal
Immunogen:	Peptide with sequence C-RQKDPVKGMTADD, from the C Terminus of the protein sequence according to NP_006215.
Formulation:	Supplied at 0.5 mg/ml in Tris saline, 0.02% sodium azide, pH7.3 with 0.5% bovine serum albumin.
Concentration:	lot specific
Purification:	Purified from goat serum by ammonium sulphate precipitation followed by antigen affinity chromatography using the immunizing peptide. Supplied at 0.5 mg/ml in Tris saline, 0.02% sodium azide, pH7.3 with 0.5% bovine serum albumin. Aliquot and store at -20°C. Minimize freezing and thawing.
Conjugation:	Unconjugated
Storage:	Store at -20°C as received.
Stability:	Stable for 12 months from date of receipt.
Gene Name:	phosphatidylinositol transfer protein alpha
Database Link:	NP_006215 Entrez Gene 18738 Mouse Entrez Gene 29525 Rat Entrez Gene 480648 Dog Entrez Gene 5306 Human Q00169
Background:	Phosphatidylinositol transfer protein is a member of a diverse set of cytosolic phospholipid transfer proteins that are distinguished by their ability to transfer phospholipids between membranes in vitro (Wirtz, 1991 [PubMed 1883207]). [supplied by OMIM]
Synonyms:	HEL-S-36; PI-TPalpha; PITPN; VIB1A



[View online »](#)

Product images:

TA302930 staining (1ug/ml) of 293 lysate (RIPA buffer, 35ug total protein per lane). Primary incubated for 1 hour. Detected by western blot using chemiluminescence.