

Product datasheet for **TA302922**

STK35 Goat Polyclonal Antibody

Product data:

Product Type:	Primary Antibodies
Applications:	IHC, WB
Recommended Dilution:	ELISA: 1:16,000. WB: 1-3µg/ml. IHC: 10µg/ml.
Reactivity:	Human (Expected from sequence similarity: Mouse, Rat, Dog, Pig, Cow)
Host:	Goat
Isotype:	IgG
Clonality:	Polyclonal
Immunogen:	Peptide with sequence ELETRMDQVTCAA, from the C Terminus of the protein sequence according to NP_543026.1.
Formulation:	Supplied at 0.5 mg/ml in Tris saline, 0.02% sodium azide, pH7.3 with 0.5% bovine serum albumin.
Concentration:	lot specific
Purification:	Purified from goat serum by ammonium sulphate precipitation followed by antigen affinity chromatography using the immunizing peptide. Supplied at 0.5 mg/ml in Tris saline, 0.02% sodium azide, pH7.3 with 0.5% bovine serum albumin. Aliquot and store at -20°C. Minimize freezing and thawing.
Conjugation:	Unconjugated
Storage:	Store at -20°C as received.
Stability:	Stable for 12 months from date of receipt.
Gene Name:	serine/threonine kinase 35
Database Link:	NP_543026 Entrez Gene 67333 Mouse Entrez Gene 311419 Rat Entrez Gene 609432 Dog Entrez Gene 140901 Human Q8TDR2
Background:	The protein encoded by this gene is a kinase that is predominantly found in the nucleus. However, it can interact with PDLIM1/CLP-36 in the cytoplasm and localize to actin stress fibers. The encoded protein may be a regulator of actin stress fibers in nonmuscle cells. [provided by RefSeq]. COMPLETENESS: complete on the 3' end.



[View online »](#)

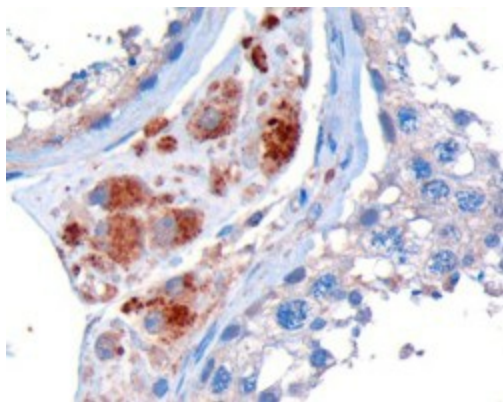
Synonyms: CLIK1; STK35L1

Protein Families: Druggable Genome, Protein Kinase

Product images:



TA302922 (1ug/ml) staining of human testis lysate (35ug protein in RIPA buffer). Primary incubation was 1 hour. Detected by chemiluminescence.



TA302922 (10ug/ml) staining of paraffin embedded human testis. Microwaved antigen retrieval with Tris/EDTA buffer pH9, HRP-staining.