

Product datasheet for **TA302919**

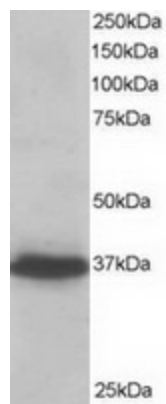
RIL (PDLIM4) Goat Polyclonal Antibody

Product data:

Product Type:	Primary Antibodies
Applications:	WB
Recommended Dilution:	ELISA: 1:32,000. WB: 0.1-0.5µg/ml
Reactivity:	Human (Expected from sequence similarity: Mouse, Rat, Cow)
Host:	Goat
Isotype:	IgG
Clonality:	Polyclonal
Immunogen:	Peptide with sequence C-DVVAVYPNAKVELV, from the C Terminus of the protein sequence according to NP_003678.2.
Formulation:	Supplied at 0.5 mg/ml in Tris saline, 0.02% sodium azide, pH7.3 with 0.5% bovine serum albumin.
Concentration:	lot specific
Purification:	Purified from goat serum by ammonium sulphate precipitation followed by antigen affinity chromatography using the immunizing peptide. Supplied at 0.5 mg/ml in Tris saline, 0.02% sodium azide, pH7.3 with 0.5% bovine serum albumin. Aliquot and store at -20°C. Minimize freezing and thawing.
Conjugation:	Unconjugated
Storage:	Store at -20°C as received.
Stability:	Stable for 12 months from date of receipt.
Gene Name:	PDZ and LIM domain 4
Database Link:	NP_001124499 Entrez Gene 24915 Rat Entrez Gene 30794 Mouse Entrez Gene 8572 Human P50479
Background:	Reversion-induced LIM protein
Synonyms:	RIL



[View online »](#)

Product images:

TA302919 staining (0.2ug/ml) of A431 lysate (RIPA buffer, 35ug total protein per lane). Primary incubated for 1 hour. Detected by western blot using chemiluminescence.