

## Product datasheet for **TA302916**

### SRP1 (KPNA1) Goat Polyclonal Antibody

#### Product data:

Product Type:	Primary Antibodies
Applications:	WB
Recommended Dilution:	ELISA: 1:32,000. WB: 1-3µg/ml.
Reactivity:	Human (Expected from sequence similarity: Mouse, Rat, Dog, Pig, Cow)
Host:	Goat
Isotype:	IgG
Clonality:	Polyclonal
Immunogen:	Peptide with sequence TTPGKENFRLKSY-C, from the N Terminus of the protein sequence according to NP_002255.1.
Formulation:	Supplied at 0.5 mg/ml in Tris saline, 0.02% sodium azide, pH7.3 with 0.5% bovine serum albumin.
Concentration:	lot specific
Purification:	Purified from goat serum by ammonium sulphate precipitation followed by antigen affinity chromatography using the immunizing peptide. Supplied at 0.5 mg/ml in Tris saline, 0.02% sodium azide, pH7.3 with 0.5% bovine serum albumin. Aliquot and store at -20°C. Minimize freezing and thawing.
Conjugation:	Unconjugated
Storage:	Store at -20°C as received.
Stability:	Stable for 12 months from date of receipt.
Gene Name:	karyopherin subunit alpha 1
Database Link:	<a href="#">NP_002255</a> <a href="#">Entrez Gene 16646 Mouse</a> <a href="#">Entrez Gene 288064 Rat</a> <a href="#">Entrez Gene 478585 Dog</a> <a href="#">Entrez Gene 3836 Human</a> <a href="#">P52294</a>



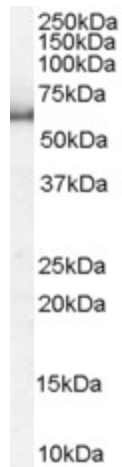
[View online »](#)

**Background:**

Recombination activating proteins RAG1 and RAG2 regulate and mediate V(D)J recombination, the process by which genes for immunoglobulins and T-cell receptors are generated. Several other ubiquitously expressed proteins are thought to be recruited in the recombination process. Among these are the genes affected in severe combined immune deficiency and genes involved in ds-DNA break repair. The protein encoded by this gene interacts with RAG1 and may play a role in V(D)J recombination. Two transcript variants, one protein-coding and the other not, have been found for this gene. [provided by RefSeq]

**Synonyms:**

IPOA5; NPI-1; RCH2; SRP1

**Product images:**

TA302916 staining (1 ug/ml) of HeLa lysate (RIPA buffer, 35ug total protein per lane). Primary incubated for 1 hour. Detected by chemiluminescence.