

## Product datasheet for **TA302915**

### EIF4ENIF1 Goat Polyclonal Antibody

#### Product data:

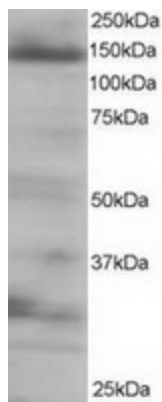
Product Type:	Primary Antibodies
Applications:	IHC, WB
Recommended Dilution:	ELISA: 1:32,000. WB: 0.25-0.5µg/ml. IHC: 5-10µg/ml.
Reactivity:	Human (Expected from sequence similarity: Mouse, Rat, Dog, Pig, Cow)
Host:	Goat
Isotype:	IgG
Clonality:	Polyclonal
Immunogen:	Peptide with sequence C-AKVISVDELEYRQ, from the C Terminus of the protein sequence according to NP_062817.1.
Formulation:	Supplied at 0.5 mg/ml in Tris saline, 0.02% sodium azide, pH7.3 with 0.5% bovine serum albumin.
Concentration:	lot specific
Purification:	Purified from goat serum by ammonium sulphate precipitation followed by antigen affinity chromatography using the immunizing peptide. Supplied at 0.5 mg/ml in Tris saline, 0.02% sodium azide, pH7.3 with 0.5% bovine serum albumin. Aliquot and store at -20°C. Minimize freezing and thawing.
Conjugation:	Unconjugated
Storage:	Store at -20°C as received.
Stability:	Stable for 12 months from date of receipt.
Gene Name:	eukaryotic translation initiation factor 4E nuclear import factor 1
Database Link:	<a href="#">NP_062817</a> <a href="#">Entrez Gene 74203</a> <a href="#">MouseEntrez Gene 305468</a> <a href="#">RatEntrez Gene 486366</a> <a href="#">DogEntrez Gene 56478</a> <a href="#">Human</a> <a href="#">Q9NRA8</a>
Background:	The protein encoded by this gene is a nucleocytoplasmic shuttle protein for the translation initiation factor eIF4E. This shuttle protein interacts with the importin alpha-beta complex to mediate nuclear import of eIF4E. It is predominantly cytoplasmic; its own nuclear import is regulated by a nuclear localization signal and nuclear export signals.



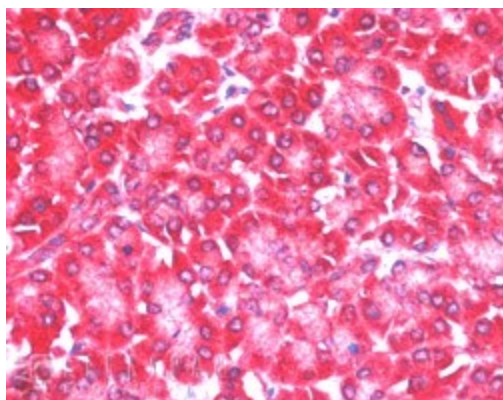
[View online »](#)

Synonyms: 4E-T; Clast4

### Product images:



TA302915 staining (0.25ug/ml) of 293 lysate (RIPA buffer, 35ug total protein per lane). Primary incubated for 1 hour. Detected by western blot using chemiluminescence.



TA302915 (5ug/ml) staining of paraffin embedded Human Pancreas. Steamed antigen retrieval with citrate buffer pH 6, AP-staining.