

Product datasheet for **TA302914**

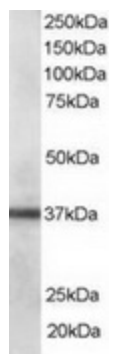
PDLIM1 Goat Polyclonal Antibody

Product data:

Product Type:	Primary Antibodies
Applications:	WB
Recommended Dilution:	ELISA: 1:64,000. WB: 0.1-1 µg/ml.
Reactivity:	Human
Host:	Goat
Isotype:	IgG
Clonality:	Polyclonal
Immunogen:	Peptide with sequence C-TPPEGYEVTVFPK, from the C Terminus of the protein sequence according to NP_066272.
Formulation:	Supplied at 0.5 mg/ml in Tris saline, 0.02% sodium azide, pH7.3 with 0.5% bovine serum albumin.
Concentration:	lot specific
Purification:	Purified from goat serum by ammonium sulphate precipitation followed by antigen affinity chromatography using the immunizing peptide. Supplied at 0.5 mg/ml in Tris saline, 0.02% sodium azide, pH7.3 with 0.5% bovine serum albumin. Aliquot and store at -20°C. Minimize freezing and thawing.
Conjugation:	Unconjugated
Storage:	Store at -20°C as received.
Stability:	Stable for 12 months from date of receipt.
Gene Name:	PDZ and LIM domain 1
Database Link:	NP_066272 Entrez Gene 9124 Human O00151
Background:	Cytoskeletal protein that may act as an adapter that brings other proteins (like kinases) to the cytoskeleton
Synonyms:	CLIM1; CLP-36; CLP36; hCLIM1; HEL-S-112



[View online »](#)

Product images:

TA302914 staining (0.1 ug/ml) of human lung lysate (RIPA buffer, 35ug total protein per lane). Primary incubated for 1 hour. Detected by western blot using chemiluminescence.