

## Product datasheet for TA302909

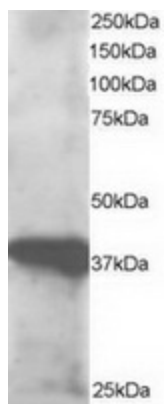
### GIPC3 Goat Polyclonal Antibody

#### Product data:

Product Type:	Primary Antibodies
Applications:	WB
Recommended Dilution:	ELISA: 1:32,000. WB: 0.2-1.5µg/ml.
Reactivity:	Human
Host:	Goat
Isotype:	IgG
Clonality:	Polyclonal
Immunogen:	Peptide with sequence EGAAAREARGTET-C, from the N Terminus of the protein sequence according to NP_573568.
Formulation:	Supplied at 0.5 mg/ml in Tris saline, 0.02% sodium azide, pH7.3 with 0.5% bovine serum albumin.
Concentration:	lot specific
Purification:	Purified from goat serum by ammonium sulphate precipitation followed by antigen affinity chromatography using the immunizing peptide. Supplied at 0.5 mg/ml in Tris saline, 0.02% sodium azide, pH7.3 with 0.5% bovine serum albumin. Aliquot and store at -20°C. Minimize freezing and thawing.
Conjugation:	Unconjugated
Storage:	Store at -20°C as received.
Stability:	Stable for 12 months from date of receipt.
Gene Name:	GIPC PDZ domain containing family member 3
Database Link:	<a href="#">NP_573568</a> <a href="#">Entrez Gene 126326 Human</a> <a href="#">Q8TF64</a>
Background:	GIPC PDZ domain containing family, member 3
Synonyms:	C19orf64; DFNB15; DFNB72; DFNB95



[View online »](#)

**Product images:**

TA302909 staining (0.5ug/ml) of human lymph node lysate (RIPA buffer, 30ug total protein per lane). Primary incubated for 1 hour. Detected by western blot using chemiluminescence.