

Product datasheet for **TA302902**

Neurobeachin (NBEA) Goat Polyclonal Antibody

Product data:

Product Type:	Primary Antibodies
Applications:	IHC, WB
Recommended Dilution:	ELISA: 1:8,000, WB: 1-3ug/mL, IHC: 5-10ug/mL
Reactivity:	Human, Mouse (Expected from sequence similarity: Dog, Cow)
Host:	Goat
Isotype:	IgG
Clonality:	Polyclonal
Immunogen:	Peptide with sequence C-DFNRWHYEHQNRV, from the C Terminus of the protein sequence according to NP_056493.3.
Formulation:	Supplied at 0.5 mg/ml in Tris saline, 0.02% sodium azide, pH7.3 with 0.5% bovine serum albumin.
Concentration:	lot specific
Purification:	Purified from goat serum by ammonium sulphate precipitation followed by antigen affinity chromatography using the immunizing peptide. Supplied at 0.5 mg/ml in Tris saline, 0.02% sodium azide, pH7.3 with 0.5% bovine serum albumin. Aliquot and store at -20°C. Minimize freezing and thawing.
Conjugation:	Unconjugated
Storage:	Store at -20°C as received.
Stability:	Stable for 12 months from date of receipt.
Gene Name:	neurobeachin
Database Link:	NP_056493 Entrez Gene 26422 Mouse Entrez Gene 477305 Dog Entrez Gene 26960 Human Q8NFP9



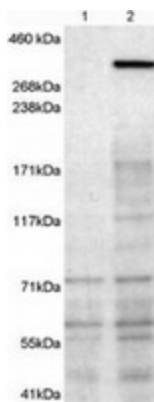
[View online »](#)

Background:

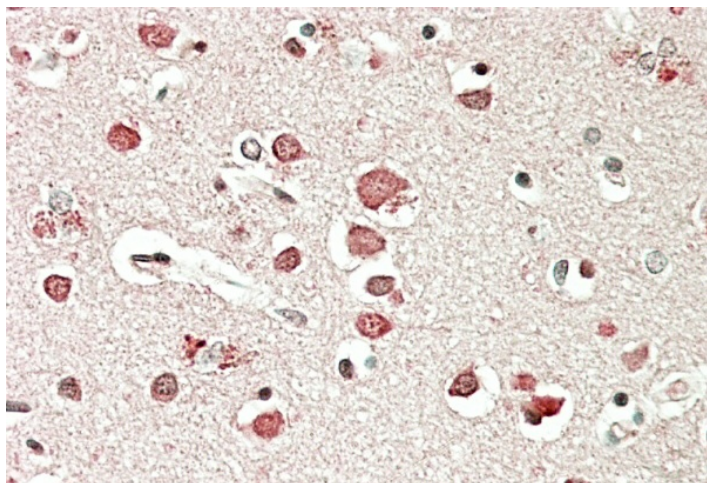
This gene encodes a member of a large, diverse group of A-kinase anchor proteins that target the activity of protein kinase A to specific subcellular sites by binding to its type II regulatory subunits. Brain-specific expression and coat protein-like membrane recruitment of a highly similar protein in mouse suggest an involvement in neuronal post-Golgi membrane traffic. Mutations in this gene may be associated with a form of autism. Alternatively spliced transcript variants may exist, but their full-length nature has not been determined. [provided by RefSeq]. COMPLETENESS: complete on the 3' end.

Synonyms:

BCL8B; LYST2

Product images:

TA302902 (1ug/ml) staining of 1) untransfected HEK293T cells 2) HEK293T cells transfected with mouse NBEA. Detected by chemiluminescence. Data kindly provided by Professor John Creemers, K.U. Leuven, Belgium



TA302902 (5ug/ml) staining of paraffin embedded Human Cerebral Cortex. Steamed antigen retrieval with citrate buffer pH 6, AP-staining.