

Product datasheet for **TA302899**

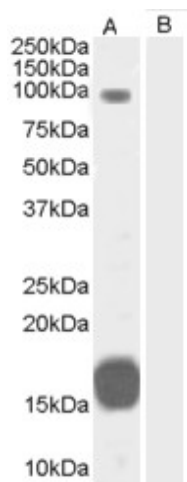
GRAF (ARHGAP26) Goat Polyclonal Antibody

Product data:

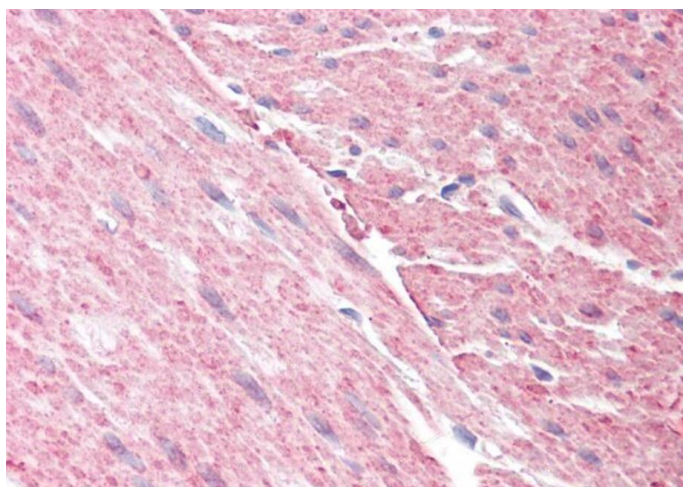
Product Type:	Primary Antibodies
Applications:	IHC, WB
Recommended Dilution:	ELISA: 1:64,000. WB: 0.3-1µg/ml.IHC:3.75µg/ml
Reactivity:	Human (Expected from sequence similarity: Mouse, Rat, Dog, Cow)
Host:	Goat
Isotype:	IgG
Clonality:	Polyclonal
Immunogen:	Peptide with sequence C-KTGLIPENYVEFL, from the C Terminus of the protein sequence according to NP_055886.1.
Formulation:	Supplied at 0.5 mg/ml in Tris saline, 0.02% sodium azide, pH7.3 with 0.5% bovine serum albumin.
Concentration:	lot specific
Purification:	Purified from goat serum by ammonium sulphate precipitation followed by antigen affinity chromatography using the immunizing peptide. Supplied at 0.5 mg/ml in Tris saline, 0.02% sodium azide, pH7.3 with 0.5% bovine serum albumin. Aliquot and store at -20°C. Minimize freezing and thawing.
Conjugation:	Unconjugated
Storage:	Store at -20°C as received.
Stability:	Stable for 12 months from date of receipt.
Gene Name:	Rho GTPase activating protein 26
Database Link:	NP_001129080 Entrez Gene 71302 Mouse Entrez Gene 307459 Rat Entrez Gene 478046 Dog Entrez Gene 23092 Human Q9UNA1
Background:	GTPase-activating protein for RHOA and CDC42
Synonyms:	GRAF; GRAF1; OPHN1L; OPHN1L1
Protein Families:	Druggable Genome



[View online »](#)

Product images:

TA302899 (0.3ug/ml) staining of Human Heart lysate (35ug protein in RIPA buffer) with (B) and without (A) blocking with the immunising peptide. Primary incubation was 1 hour. Detected by chemiluminescence.



TA302899 (3.75ug/ml) staining of paraffin embedded Human Colon. Steamed antigen retrieval with citrate buffer pH 6, AP-staining.