

Product datasheet for **TA302895**

Centaurin alpha 1 (ADAP1) Goat Polyclonal Antibody

Product data:

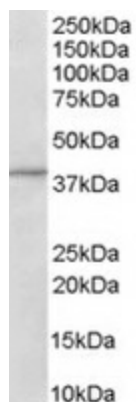
Product Type:	Primary Antibodies
Applications:	WB
Recommended Dilution:	ELISA: 1:32,000. WB: 1-3µg/ml.
Reactivity:	Human, Mouse (Expected from sequence similarity: Rat, Pig, Dog)
Host:	Goat
Isotype:	IgG
Clonality:	Polyclonal
Immunogen:	Peptide with sequence C-QEYAVEAHFKHKP, from the C Terminus of the protein sequence according to NP_006860.
Formulation:	Supplied at 0.5 mg/ml in Tris saline, 0.02% sodium azide, pH7.3 with 0.5% bovine serum albumin.
Concentration:	lot specific
Purification:	Purified from goat serum by ammonium sulphate precipitation followed by antigen affinity chromatography using the immunizing peptide. Supplied at 0.5 mg/ml in Tris saline, 0.02% sodium azide, pH7.3 with 0.5% bovine serum albumin. Aliquot and store at -20°C. Minimize freezing and thawing.
Conjugation:	Unconjugated
Storage:	Store at -20°C as received.
Stability:	Stable for 12 months from date of receipt.
Gene Name:	ArfGAP with dual PH domains 1
Database Link:	NP_006860 Entrez Gene 171097 RatEntrez Gene 231821 MouseEntrez Gene 606942 DogEntrez Gene 11033 Human O75689
Background:	GTPase-activating protein for the ADP ribosylation factor family (Probable). Binds phosphatidylinositol 3,4,5-trisphosphate (PtdInsP3) and inositol 1,3,4,5-tetrakisphosphate (InsP4)
Synonyms:	CENTA1; GCS1L; p42IP4



[View online »](#)

Protein Families: Druggable Genome

Product images:



TA302895 (1ug/ml) staining of Human Brain lysate (35ug protein in RIPA buffer). Primary incubation was 1 hour. Detected by chemiluminescence.